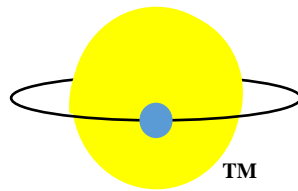


A Practical Guide to Exoplanet Observing

**Revision 5.2
November 2022**



by

Dennis M. Conti

dennis@astrodennis.com

www.astrodennis.com

Table of Contents

1. Introduction.....	4
2. Background.....	5
3. Exoplanet Observing.....	6
4. Instrumentation	7
4.1. Mount	7
4.2. Optical Tube Assembly (OTA).....	8
4.3. Imaging Camera	9
4.4. Autoguiding.....	9
4.5. Filters.....	11
5. Preliminaries	11
5.1. Information Collection	11
5.2. Considerations for Selecting an Exoplanet Target.....	12
5.3. Meridian Flip Predictions.....	13
6. Best Practices	13
6.1. Preparation Phase	13
6.1.1. File Directories.....	13
6.1.2. Stabilization of Imaging System to Appropriate Temperature.....	13
6.1.3. Generation of Flat Files	14
6.1.4. Autoguiding	14
6.2. Imaging Phase	14
6.2.1. Choice of Binning.....	14
6.2.2. Choice of Exposure Time	14
6.2.3. Time Synchronization.....	16
6.2.4. Time System	16
6.2.5. Operating Temperature	16
6.2.6. Image Capturing.....	16
6.3. Image Calibration Phase.....	17
6.3.1. Calibration Files.....	17
6.3.2. Flat Fielding Techniques.....	17
6.3.3. Creation of Master Files.....	19
6.3.4. Updating FITS Header Information.....	20

6.4.	Aperture and Differential Photometry Phase	20
6.4.1.	Aperture Photometry	20
6.4.2.	Differential Photometry	21
7.	Using AstroImageJ.....	21
7.1.	Loading Images into AIJ	22
7.2.	Calibrate Science Images	25
7.2.1.	Specifying Science Images and Calibration Files.....	27
7.2.2.	Updating FITS Header Information.....	27
7.2.3.	Begin the Calibration Process.....	30
7.2.4.	Real-time Operation.....	31
7.2.5.	Additional Options.....	31
7.3.	Loading Calibration Images	31
7.4.	Plate Solving Using AIJ	32
7.4.1.	Astrometry.net Alternatives	33
7.4.2.	Astrometry Information	34
7.5.	Conduct Differential Photometry	34
7.5.1.	Select Appropriate Aperture and Annulus Settings	34
7.5.2.	Prepare For and Begin the Differential Photometry	37
7.5.3.	Dealing with Misaligned Images	40
7.5.4.	Dealing with a Meridian Flip.....	41
7.5.5.	Storing and Later Retrieving Target and Comparison Star Locations.....	41
7.6.	Prepare for Model Fit	42
7.7.	Conduct Model Fit	43
7.8.	Light Curve Plot.....	45
7.9.	Data Set Fittings Screen	48
7.10.	Saving Model Data	54
7.11.	Optimizing Model Fit	55
7.12.	Input to External Programs.....	56
8.	Summary.....	58

1. Introduction

This is a step-by-step guide to exoplanet observing that is intended for both the newcomer to exoplanet observing, as well as for the more-experienced exoplanet observer. For the former, it is desirable that the user have some experience in deep sky or variable star imaging. The more experienced exoplanet observer may find this Guide useful as a refresher on “best practices,” as well as a practical guide for using AstroImageJ (AIJ) for image processing and exoplanet transit modeling. AIJ is freeware software that is an all-in-one package for image calibration, differential photometry, and exoplanet modeling. AIJ has become the *de facto* standard for exoplanet analysis and modeling for both professional and advanced amateur astronomers.

This Guide will lead the user through all the phases of exoplanet observing, from the selection of suitable exoplanet targets to the modeling of exoplanet transits. Actual exoplanet transits are used to demonstrate the techniques and AIJ capabilities for exoplanet transit modeling.

Links to the latest version of this Guide, as well as the calibration files, science images, and AIJ plot configuration file that are used in the AIJ examples in Section 7 can be found at www.astrodennis.com.

In various sections below, references are made to a separate AIJ User Guide that was authored by the developer of AIJ and describes more details and options on the use of AIJ than are covered in this guide. The latest version of that AIJ User Guide, and a link to the AIJ user forum, can be found at AIJ’s website: <http://www.astro.louisville.edu/software/astroimagej/>. An in-depth description of AIJ features can be found in the following paper: <https://iopscience.iop.org/article/10.3847/1538-3881/153/2/77/pdf>.

Recently there has been an increased need for ground-based observations to support all-sky, exoplanet surveys such as TESS (Transiting Exoplanet Survey Satellite) (Ricker *et al.*, 2015). For such surveys, one of the main purposes of ground-based observations is to help distinguish true exoplanet transits from false positives (e.g., due to a near-by eclipsing binary). Therefore, a companion paper to this Guide has been prepared that describes the methods and best practices for detecting false positives. The latest version of this paper can be found at: www.astrodennis.com/FalsePositiveDetection.pdf.

This Guide will use the following definitions of “candidate exoplanet” and “confirmed exoplanet,” as stated in the Glossary of the TESS Science Writers’ Guide (NASA 2018):

Candidate exoplanet: A signal in the data that exhibits the characteristics of a transiting exoplanet but has not yet been confirmed.

Confirmed exoplanet: A signal in the data that exhibits the characteristics of a transiting exoplanet and has been confirmed, typically with additional data from complementary surveys or statistical analyses of existing data.

Finally, although this Guide is written with amateur astronomers in mind, the best practices and methods described here are also applicable for professional astronomers with access to sub-meter telescopes.

2. Background

In 1995, 51 Pegasi b was the first exoplanet detected around a main sequence star. To date, over 5,000 exoplanets have been confirmed by Kepler, TESS, and other space and ground-based observatories.

Amateur astronomers have been successfully detecting exoplanets for at least a decade, and have been doing so with amazing accuracy! Furthermore, they have been able to make such observations with the same equipment that they use to create fabulous looking deep sky pictures or variable star light curves.

Several examples exist of amateur astronomers providing valuable data in support of exoplanet research. In 2004, a team of professional/amateur astronomers collaborated on the XO Project, which resulted in the discovery of several exoplanets. The KELT program (Pepper *et al.*, 2007) used a world-wide network of amateur astronomers and small colleges, along with professional astronomers, to conduct follow-up observations of candidate exoplanets transiting bright stars. In 2016, a network of amateur astronomers supported a Hubble survey of some 15 exoplanets by conducting observations in the optical wavelength, while Hubble was studying these same exoplanets in the near-infrared (Conti, 2015 and Motta, 2017). More recently, amateur astronomers have played a significant role in the TESS Follow-Up Observing Program (TFOP). Amateur astronomer observations such as these have helped to confirm candidate exoplanets, as well as refine the ephemerides of already known exoplanets. The mere fact that amateur astronomers can accurately model the transits of existing exoplanets means that it is also theoretically possible for them to discover new exoplanets! For example, by detecting variations in the transit time of a known exoplanet (a technique called “transit time variations”, or TTVs), amateur astronomers can help detect the existence of another planet orbiting the host star.

Recently, the AAVSO (American Association of Variable Star Observers) has developed a database for archiving amateur astronomer observations of confirmed exoplanets to provide a long-term baseline for both the refinement of their ephemerides, as well as to assist in the detection of TTVs (see <https://app.aavso.org/exosite/doc>). This database is also being used by NASA’s Exoplanet Watch program (NASA, 2022) to store such observations by citizen scientists.

The formalization of “best practice” techniques for exoplanet detection by amateur astronomers began in 2007 with Bruce Gary’s publication of “Exoplanet Observing for Amateurs.” At the same time, Gary began an effort to archive the exoplanet observations of other amateur astronomers. This archive, the Amateur Exoplanet Archive (AXA), was subsequently transferred to the Exoplanet Transit Database (ETD) project, an online archive sponsored by the Czech Astronomical Society (<http://var2.astro.cz/ETD/contribution.php>).

With the latest space telescopes such as TESS and JWST (James Webb Space Telescope) (NASA, 2017), the need for amateur astronomer participation in exoplanet research is only going to increase.

In order to contribute to exoplanet science, observations by amateur astronomers demand a much more rigorous approach than that required for more typical amateur astronomer endeavors, such as deep sky or planetary imaging. This Guide describes the best practices that have evolved to date for conducting such research-grade exoplanet observing.

Section 3 will provide an overview of exoplanet observing. Section 4 will discuss some of the considerations involved in the selection of equipment for exoplanet observing. Section 5 will review the preliminary steps to be taken prior the observation itself. Section 6 will then review the best practices involved in an exoplanet observation. Section 7 will present a detailed description of the use of AIJ in exoplanet image reduction and transit modeling. Finally, Section 8 will describe various false positive scenarios and detection methods.

3. Exoplanet Observing

The basic concept of exoplanet observing involves taking a series of images of the field surrounding the host star of an exoplanet before, during, and after the predicted times of the exoplanet transit across the face of its host star.

Because the transit method is the dominant technique used by amateur astronomers to conduct exoplanet observations, this Guide will focus on observing and modeling techniques related to this method. The transit method has been very useful, especially for detecting “hot Jupiters,” namely large planets whose orbits are close to their host stars and where the planet passes directly in front of the star from the perspective of an observer on Earth. With missions such as TESS, the transit method is even being used to detect Earth and super-Earth size planets around cool, bright stars. The transit method relies on measuring the flux of the suspected host star (herein also referred to as “the target star”), as well as the flux of one or more “comparison stars” that are all in the same field-of-view.

Exoplanet transits are typically 2-4 hours long. However, conducting an exoplanet observation also involves beginning the imaging session at least 30 minutes prior to the predicted beginning of transit (“pre-ingress”) and continuing for at least 30 minutes after the expected transit (“post-egress”). These “pre-ingress” and “post-egress” times are used to help establish an out-of-transit (OOT) baseline. Thus, it is not unusual for an exoplanet observing session to be 6 hours in length.

A technique called differential photometry is used to determine the changes in brightness (flux) of the exoplanet’s host star that might indicate an exoplanet transit. This technique compares the relative difference between the host star and one or more (assumed to be non-variable) comparison or “comp” stars during the imaging session. Since the difference in brightness of the host star and comp star(s) are equally influenced by common factors such as thin overhead

clouds, moon glow, light pollution, etc., a change in this difference would be a measure of the effects of the drop in brightness of the host star due to an exoplanet transiting in front of it.

The data points that represent the star's relative change in brightness are then used to model the exoplanet transit. A "best fit" transit model is then created from these data points. This best fit results in estimates of key parameters about the exoplanet and its transit. These parameters include:

1. the square of the ratio of the radius of the exoplanet (R_p) to that of its host star (R_*),
2. the ratio of the exoplanet's semi-major orbital radius (a) to R_* ,
3. the center point T_c and the duration of the transit,
4. the inclination of the exoplanet's orbit relative to the observer's line-of-sight.

Thus, by knowing the radius R_* of the exoplanet's host star, the exoplanet observer can then actually estimate the radius of the exoplanet, as well as the radius of its semi-major orbit.

This estimate of a candidate exoplanet's radius can also be an important factor in detecting one of the false positive scenarios, for example, whether the transiting body is more likely a secondary star eclipsing another star vs. a planet eclipsing its host star.

4. Instrumentation

Certainly, cost is a factor when selecting the complement of equipment to be used in exoplanet observing. And as expected, higher precision demands higher cost equipment. Thus, the choice of equipment (and therefore precision associated with that equipment) is determined mostly by economics. However, amateur astronomers with modest equipment on the order of what is typically used for deep sky imaging have materially contributed to exoplanet science.

As will be seen, a recurring theme throughout this Guide is the desire to minimize the movement of the star field across the imaging camera during a multi-hour observing session.

The following describes those equipment characteristics that most affect exoplanet observing precision and help reduce the effects of systematics.

4.1. Mount

The three most popular mount types are German equatorial mounts (GEMs), fork mounts, and alt-az (altitude-azimuth) mounts. With alt-az mounts, continuous corrections need to be made in three (3) axes to keep a star in relatively the same position throughout the observing session. These corrections need to be made in elevation, azimuth, and position angle. Obviously, this means that the precision associated with any of these three axis corrections will affect the observer's overall ability to minimize star movement. Position angle corrections, for example, are normally made by a rotator, and the incremental step size of the rotator, as well as the

cadence of such corrections, will affect the precision with which the image chain can rotate to relatively the same pixel position throughout the observing session.

GEMs, which are popular cost-effective mounts for deep-sky and planetary imaging. However, GEMs will typically require a meridian flip when the target star passes across the meridian. Although some GEMs can continue tracking for some amount of time after the meridian, observations that require longer tracking will ultimately require a meridian flip. A meridian flip results in three factors potentially affecting precision: (1) valuable data points are lost during the time it takes for the meridian flip; (2) with no rotation of the imaging chain, the target and comparison stars will fall on the part of the imaging camera's detector that is diagonally opposite to where they were pre-flip; and (3) if off-axis guiding is employed, it may not be possible to find a suitable guide star. The implication of (2) is that the flux of stars would artificially increase or decrease due to them landing on part of a dust donut that was not fully corrected by flat fielding. Even if the image chain was rotated, getting the target and comparison stars on nearly the same pixel locations as pre-flip would be practically impossible. It should be noted that software such as AIJ can help compensate for the effects of a meridian flip, especially if it occurs near mid-transit.

Although fork mounts are thus the most suitable mount for exoplanet observing because of their ability to continuously track a target star for a long duration without having to be interrupted to perform a meridian flip, GEMs have been used by amateur and professional astronomers alike to do high precision exoplanet observing.

Regardless of the type of mount used, tracking precision is also a function of any periodic error in the mount's gears. Periodic Error Correction (PEC) and autoguiding will help mitigate such periodic errors. It should be noted that some of today's mounts can operate for minutes with minimal errors; this of course comes at greater expense.

Best practices associated with the operation of the mount itself include:

1. polar align the mount as accurately as possible (e.g., within a few arcseconds of the celestial pole);
2. balance the mount to help reduce RA errors;
3. in the case of a GEM mount, reduce RA backlash by always keeping the mount "East heavy" – this will help with any plate solving that might be needed after a meridian flip in order to get back on target;
4. minimize DEC backlash, which would allow for better DEC corrections during autoguiding;
5. minimize periodic error by checking for any worm or ring gear grit, as well as by using PEC to help correct any remaining errors.

4.2. Optical Tube Assembly (OTA)

Best practices associated with choosing and maintaining the telescope's optical tube assembly (OTA) include the following:

1. Aperture matters, so the larger the aperture, the greater ability to collect photons in a given unit of time. This is especially important for fainter target stars. Of course, local seeing conditions could in some cases be a more limiting factor than aperture.
2. The OTA should be *in situ* for enough time for it to get acclimated to the temperature of its operating environment. This would help reduce any internal air turbulence due to changing temperature within the OTA.
3. In order to produce a well-formed point-spread function (PSF) for the target and each comparison star, the OTA should be well-collimated.
4. For Schmidt-Cassegrain OTAs, the primary mirror should be locked down, if possible, in order to reduce the effects of “mirror flop.”

4.3. Imaging Camera

A variety of cameras have been used for exoplanet transit observing. These include stand-alone CCD and CMOS cameras similar to those used for deep sky imaging, as well as DSLR's. However, for conducting research-grade exoplanet observing, the camera should be monochrome. This is so that it would be possible to use different standard photometric filters. Because DSLR cameras are inherently color and therefore don't lend themselves to the use of filters, they are the least desirable imaging camera choice.

Best practices for choosing an imaging camera to use in exoplanet observing is dependent upon factors such as:

1. The expected seeing conditions at the observer's location. This is defined as the typical full-width-at-half-maximum (FWHM) of stars measured at the observer's location and expressed in arcseconds.
2. The size (i.e., format) of the camera's detector. Although a larger format allows for a greater variety of comparison stars to choose from, small format detectors have successfully been used in research-grade exoplanet observing.
3. The bias, dark current and readout noise of the camera. These factors, however, are much reduced in today's newer cameras.

In general, most modern monochrome imaging cameras that the observer has or will be acquiring for other applications such as deep sky imaging, should be satisfactory for exoplanet observing.

4.4. Autoguiding

Autoguiding is essential for research-grade exoplanet observing in order to minimize the drift of the target and comparison stars. Drift due to polar misalignment, for example, will cause field rotation of stars and therefore their movement over the field-of-view. This movement over a not fully flat-field corrected image can seriously affect the precision of the observation.

The most common approaches to autoguiding and their pros and cons are:

1. Use of a separate guide scope – this is the least desirable method due to issues with flexure that may occur during the observing session.
2. Off-axis guiding – although frequently used by deep sky imagers to get pinpoint stars, this technique will still result in some amount of field rotation of the target and comparison stars over a several hour observation period, even in the presence of a small amount of polar misalignment. This is true even with sub-arcsecond movement of the guide star itself. The amount of field rotation (i.e., the drift in RA and DEC) will be a function of:
 - a. the distance of the guide star from the target or comp stars in question;
 - b. the amount of polar misalignment;
 - c. the amount of delta movement of the guide star itself;
 - d. the declination angle when the image is taken (polar misalignment will have a greater affect, especially in RA, when imaging at higher declinations).
3. On-axis guiding – this technique employs a dichroic beam splitter to separate the light path of the main image into a near infrared (NIR) path and a visible light path (di Cicco, 2012) . Here, the guide camera sees, via the infrared path, part of the same image as the imaging camera (depending on the size of the guide camera’s detector). With this technique, the guide star is closer to the target and comparison stars, and therefore the effects of any polar misalignment are reduced as compared to the off-axis guiding approach. Furthermore, in the case of meridian flips with GEMs, the same guide star that was being used pre-flip can also be used post-flip, thereby eliminating the need for a rotator or for a search for another guide star.
4. Image guiding – a relatively new autoguiding technique is to make mount corrections between exposures based on the amount of total shift of the science image itself. (Note: the term science image is used in this Guide to refer to the raw images of the field-of-view containing the exoplanet host star; such images are also often referred to as Lights by other image processing software.) A variant of this (Baudat, 2017) is where mount corrections are made during exposures of the science images.

In addition to the above autoguiding techniques, active optics (AO) devices are also available to the amateur astronomer so that a variety of rapid gear errors can be corrected without making physical “bumps” to the mount. This technique uses a “tip-tilt” mirror or a straight-through optical window that is in the optical path to keep a guide star centered without making physical “bumps” to the mount.

Autoguiding software is optionally available for most of the popular imaging software packages. A popular freeware guiding software package is PHD2 (see <http://openphdguiding.org>).

4.5. Filters

As mentioned earlier, it is desirable that a standard photometric filter be used for exoplanet work, such as the Johnson-Cousins U, V, B, Rc, and Ic filters, or the SDSS (Sloan Digital Sky Survey) u', g', r', and i' filters. This is true for at least three reasons:

1. limb darkening coefficients used during the transit modeling process are a function of the (standard) filter type, as well as stellar parameters of the target star;
2. distinguishing transits due to eclipsing binaries vs. exoplanets employs using alternating standard filters across the observing session - the transit depth of the eclipsing binary will generally be different for two different filters;
3. results from two different observers can be better compared.

Even though it is not a “standard” photometric filter, a Clear Blue Blocking (CBB) filter, sometimes called an “Exoplanet Filter,” can be used to reduce the effects of sky glow.

In order to distinguish an exoplanet transit from that of two eclipsing binary stars, a chromaticity test is often conducted. This is because a transiting exoplanet transit should result in no wavelength-dependent transit depth, whereas a transit of one star eclipsing the other typically results in a different transit depth when observed in different wavelengths. Such a chromaticity test can be done using different filters at different transit times, or preferably, such a test can be done during one observation run using alternating filters.

5. Preliminaries

This section discusses some of the preliminary steps which can be done several days prior to the actual exoplanet observation that will lead to a more effective observing session.

5.1. Information Collection

Appendix A is an example of an Excel worksheet that the observer can use to record certain pieces of critical information about the observation, and will also provide a convenient source of information needed by AIJ. The data depicted in Appendix A is also used as the basis for the example in this Guide, namely the modeling of a full transit of the WASP-12b exoplanet. If no changes are made to the observer’s instruments or location, items 12-23 in Appendix A can be used across multiple observing sessions

The latest version of this worksheet can be downloaded from www.astrodennis.com. The spreadsheet also contains hot links to web resources where the user can obtain some of the information, if available, on the target star and exoplanet parameters that are needed as input to the transit modeling phase, including the appropriate limb darkening coefficients for the particular filter being used in the observation.

5.2. Considerations for Selecting an Exoplanet Target

For confirmed exoplanets, the following are useful sources for predicting exoplanet transits for a given time period at a particular observer's location:

NASA Exoplanet Archive: <http://exoplanetarchive.ipac.caltech.edu/cgi-bin/TransitView/nph-visibletbls?dataset=transits>

Exoplanet Transit Database (ETD) Website: <http://var2.astro.cz/ETD/predictions.php>.

A user-friendly transit finder developed by Eric Jensen of Swarthmore College can be used to determine several thousand transiting exoplanets, as well as TESS Targets of Interest (TOIs), that are predicted to produce a transit at a user-specified location on a given night or range of nights: <https://astro.swarthmore.edu/transits/transits.cgi>.

For missions such as TESS, whose objective is to initially confirm whether a detected transit is due to an exoplanet or a false positive, the observer will be given access to a secure transit finder, similar to the Swarthmore one referenced above.

If the exoplanet observer is free to select an exoplanet target for observation, then the following criteria should be considered that will result in a more satisfying result:

1. Beginning time of transit – since it is desirable that the imaging session start at least 30 minutes before the beginning of the transit, this may negate some exoplanet candidates since this might put the start time before or even during twilight.
2. Duration of transit – with some transit durations longer than others, the observer may want to pick a candidate whose total session time (considering the desire to image 30 minutes after the actual end of the transit) is suitable to the observer.
3. Magnitude of the host star and depth of the transit – exoplanet host stars can range in V magnitude from 8.0 to over 13.0, and dips in the star's magnitude due to the exoplanet transit can range from hundredths to thousandths of a magnitude. The observer might therefore want to choose an exoplanet target with a larger predicted % drop in magnitude than another potential target.

Exoplanet transit depths are often expressed in milli-magnitudes (mmag), where 1 mmag = 0.001 magnitude. Thus, a transit depth of 10 mmag equals a drop in magnitude of 0.01 or 1%. Transit depths less than 10 mmag have been achievable using sub-meter aperture telescopes under suitable seeing conditions. Note that the relation between magnitude and flux is such that $f_1/f_2 = 2.512^{(m_2-m_1)}$, where f_1 and f_2 are fluxes and m_1 and m_2 are the corresponding magnitudes. Thus, a 0.01 drop in magnitude equals a 0.009 relative change in flux. Because flux and magnitude at these small amounts are approximately the same, relative changes in flux are often used as a substitute for magnitude when measuring and referring to the transit depth. In fact, more recent surveys such as TESS are now expressing transit depths in “ppt” (parts-per-thousand).

5.3. Meridian Flip Predictions

For observers with German equatorial mounts, the observer should predict approximately when, if at all, a meridian flip might be required during the imaging session. This prediction is typically done using the observer's navigation software and is helpful so that the observer can be available during the meridian flip to make any necessary adjustments for repositioning the imaging system's field-of-view as expeditiously as possible.

Observers with German equatorial mounts may also face another issue associated with a meridian flip. Namely, if there is no rotation of the imaging chain, a new guide star will be needed to be acquired when off-axis guiding is employed. Section 4.4 discussed the advantages of on-axis guiding for this situation.

6. Best Practices

This section describes the best practices associated with the actual exoplanet observation. These best practices should help the exoplanet observer obtain the highest level of precision for a given instrumentation package. They are organized by the respective phase of the exoplanet observing process to which they apply.

6.1. Preparation Phase

6.1.1. File Directories

On the computer that runs the observer's image capture software, it is best to initially setup the following subdirectories: AIJ Analysis, Bias, Darks, Flats, Quarantined Images, and Science Images. The AIJ Analysis subdirectory is where measurement and model fit files from AIJ can be stored. The Bias, Darks, and Flats subdirectories are where the respective calibration files can be stored. The Science Images subdirectory would hold the raw images containing the target star, and the Quarantined Images subdirectory is where "bad" science images due to cosmic ray hits, satellite, tracks, etc. could be parked. If the user wishes to use other names for these subdirectories, then such names may be substituted for their respective counterparts in the examples that follow.

6.1.2. Stabilization of Imaging System to Appropriate Temperature

The imaging system should be put in place with enough time for it to reach its desired temperature set-point, which might also require enabling of its cooling system.

6.1.3. Generation of Flat Files

Whether twilight flats are taken or flats are generated by using an electroluminescence panel, they should (ideally) be redone prior to or after each imaging session using the same imaging chain as was used for taking the science images, and with the imaging chain not having been displaced or moved. See Section 6.3.2 for guidelines on creating flats.

6.1.4. Autoguiding

Autoguiding should be used during the Imaging Phase below, unless the observer's mount is of such accuracy that it can maintain guiding within a few pixels for the duration of the transit observation (where the actual value of "a few" depends on the FWHM of the host star). See Section 4.4 above for an overview of various autoguiding techniques. The observer's auto-guiding mechanism should be calibrated, if not yet done or if the auto-guiding software does not automatically correct for changes in declination. If needed, calibration should also be done for any active optics (AO) system that is being used.

6.2. Imaging Phase

6.2.1. Choice of Binning

The FWHM of stars in the target field should be spread out over 3-5 pixels. If the imaging camera is normally setup to bin more than 1x1, binning might have to be reduced to achieve this. This then would result in an acceptable image scale (sometimes called "plate scale" or "pixel scale"). Image scale is expressed in arc-seconds per pixel and is a function of the focal length of the telescope and the size of the imaging camera's photosite. For example, assume that the FWHM is 3.0 arc-seconds, and the unbinned image scale of the observer's imaging system is 0.5 arc-seconds/pixel. This means that, without binning, the FWHM would be spread over 6 pixels and that 2x2 binning would mean that the FWHM would be spread over 3 pixels, still within the acceptable, albeit the lower, part of the range.

Stars should be brought into precise focus if for no other reason than to get an accurate measure of FWHM. However, if the target star is too bright and could saturate the imaging camera, it may be necessary to defocus the OTA. If the sky background is not too high, defocusing that results in a PSF of 10-20 pixels is acceptable, as long as this defocusing doesn't result in the flux of a nearby star blending with the target star's flux.

6.2.2. Choice of Exposure Time

The optimal exposure time is one that maximizes the target star's SNR, while not saturating the imaging camera's detector. For a given target star, factors that affect the optimal exposure time include:

1. the telescope's aperture size,
2. the filter used,
3. the quantum efficiency (QE) of the imaging camera,
4. whether the star is rising to the local meridian, or has passed the meridian and is falling, and
5. seeing conditions.

Today's CCD detectors typically have a linear range up to a point, after which they become non-linear and then, at some point they become saturated. At its saturation point, any additional photons hitting the CCD photosite will not be accurately registered. Thus, it is critical that the target and comp stars never reach saturation and ideally not reach non-linearity as well (it should be noted, however, that software such as AIJ does provide a facility for making non-linearity corrections). The AAVSO Guide to CCD/CMOS Photometry (AAVSO, 2022) describes a process for determining a camera's linearity characteristics. It is important that the exposure time be chosen such that a decent SNR is achieved, but not long enough that neither non-linearity nor saturation occurs. If the target star is predicted to rise toward the local meridian and, therefore its light will pass through less and less air mass, either of these two situations could occur. Thus, the observer should also take this into consideration when choosing an exposure time.

In order to initially set the correct exposure time, a series of test images should be taken with increasing exposure time. The SNR of the target star, as well as its ADU counts, could then be measured for each exposure setting. Section 7.5.1 describes how AIJ can be used to determine a star's SNR. An exposure setting that maximizes SNR, but doesn't present a potential for saturation during the imaging session should then be considered as the ideal exposure time.

The following best practice procedure conducted immediately prior to the actual observing session is recommended to determine the optimal exposure time:

1. At the target star's current sky position, take test images at various exposure times. First, select the exposure time with the greatest SNR for the target star where the peak ADU count is less than 75% of the saturation point of the imaging camera's detector. Note: this 75% limit may have to be reduced if the camera is expected to reach non-linearity much earlier.
2. If the star will be rising toward the local meridian, reduce the exposure time such that the detector will not reach saturation.
3. If the star will be falling from the local meridian, increase the exposure time such that the peak ADU count of the target star is equal to 75% of the saturation point of the detector.

There are some situations where the professional science team might require a certain cadence of images to be taken, which might be at the expense of the (longer) optimal exposure time. This may be the case where finer details of the pattern of the light curve are more important than the accuracy of the light curve depth itself. Also, to confirm some false positive scenarios, it may be necessary to increase the exposure time, and therefore the SNR, of faint stars near the original target, at the expense of possible saturation of the target.

6.2.3. Time Synchronization

Because of the natural drift in the image capture computer's clock, it should be frequently synchronized with the U.S. Naval Observatory's Internet time server. This can be done using (freeware) software such as Dimension 4 (see <http://www.thinkman.com/dimension4/>). The update period for such clock synchronizations should be set to at least every 2 hours.

6.2.4. Time System

Because of the existence of several different time systems, the exoplanet observer should be aware which one is being used for the transit prediction, which one is being entered into the image FITS headers, which one is being used during the light curve modeling process, etc. The more commonly used time systems are:

- a) Julian Date/Universal Coordinated Time (JD_{UTC}),
- b) Heliocentric Julian Date/Universal Coordinated Time (HJD_{UTC}),
- c) Barycentric Julian Date/Barycentric Dynamical Time (BJD_{TDB}).

If the results of the exoplanet observation are to be used in a professional/amateur collaboration, BJD_{TDB} would be the desired time standard to use during the model fitting process. Sections 7.2.2 and 7.6 describe how AIJ can convert the time of the captured images to BJD_{TDB} time.

6.2.5. Operating Temperature

The imaging system should be put in its operating environment with enough time for it to reach as low a temperature set-point as possible, which might also require enabling of its cooling system.

6.2.6. Image Capturing

The observer's normal image capture software is used to capture the science images into the Science Images subdirectory during this phase. Should a meridian flip be necessary during the imaging session, then at the time the meridian flip is needed, the observer should:

1. Abort the image capture software
2. Stop autoguiding
3. Execute the meridian flip
4. Reposition the target star as necessary in the camera's field-of-view
5. Enable autoguiding
6. Enable the image capture software.

6.3. Image Calibration Phase

6.3.1. Calibration Files

Prior to or after the capture of science images, the user would also capture a series of darks, flat field, and bias calibration files and store them in their respective subdirectories. A rule of thumb is to (ideally) capture an odd number of images for each such calibration series. An odd number is suggested, since this better allows for a median combine to later be used to create the master dark, master flat, and/or master bias files. In any case, at least sixteen (16) images should be captured for each calibration file type.

Guidelines for exposure times for each of these calibration file types are as follows:

1. Dark files – exposure time should equal that of the science images and should be taken at the same temperature as were the science images.
2. Flat field files – exposure time is dependent on the flat fielding technique used, but typically takes 3 seconds or less. However, this exposure time may have to be increased for cameras with automatic shutters so that no shutter shading occurs. A rule of thumb is to create flat field frames such that the resulting histogram is mid-way within the dynamic range of the CCD detector. For example, for a detector with a typical maximum ADU count of 65,000, the brightness of the light source would be set such that the center of the resulting histogram is at 32,000 ADUs. As discussed in Section 6.3.2 below, special consideration is needed for the creation of flat files.
3. Bias files – a bias file is a dark file of 0 second exposure time.

Typically, flat dark files are also created since the flat fields themselves contain dark current that needs to be subtracted out. When used, “flat darks” are taken at the same exposure time as the flat field files themselves. However, as seen in Section 7.2 below, a technique employed by AIJ that can scale the Master Dark to the same exposure time as the Master Flat obviates the need for the user to generate flat dark files.

6.3.2. Flat Fielding Techniques

Because star movement over a few pixels is inevitable even with autoguiding and fairly accurate polar alignment, flat field correction is relied upon to mitigate the effects of dust donuts and vignetting. Poor flat fielding is one of the major contributors to systematics. For example, Figure 1 depicts a flat field and the potential movement of a star onto a nearby dust donut. Figure 2 depicts what would happen in the case of a meridian flip, namely the star would flip across the diagonal of the detector and possibly land on another dust donut. If flat field correction is not performed for either of these two cases, the flux of the star in question would artificially change.

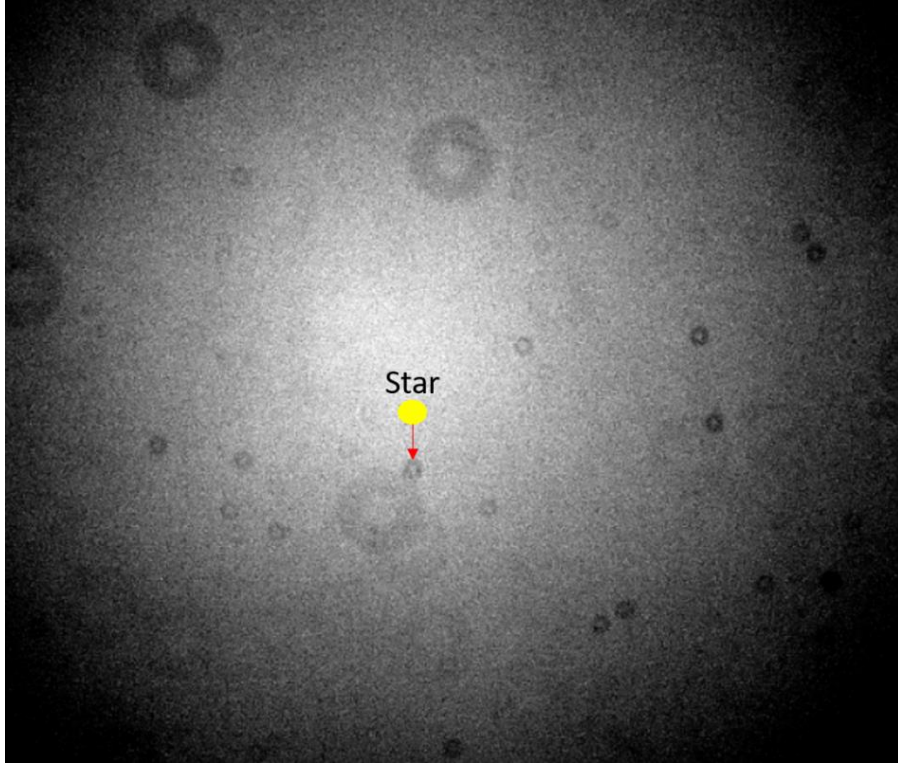


Figure 1. Star Movement onto an Uncorrected Flat Field

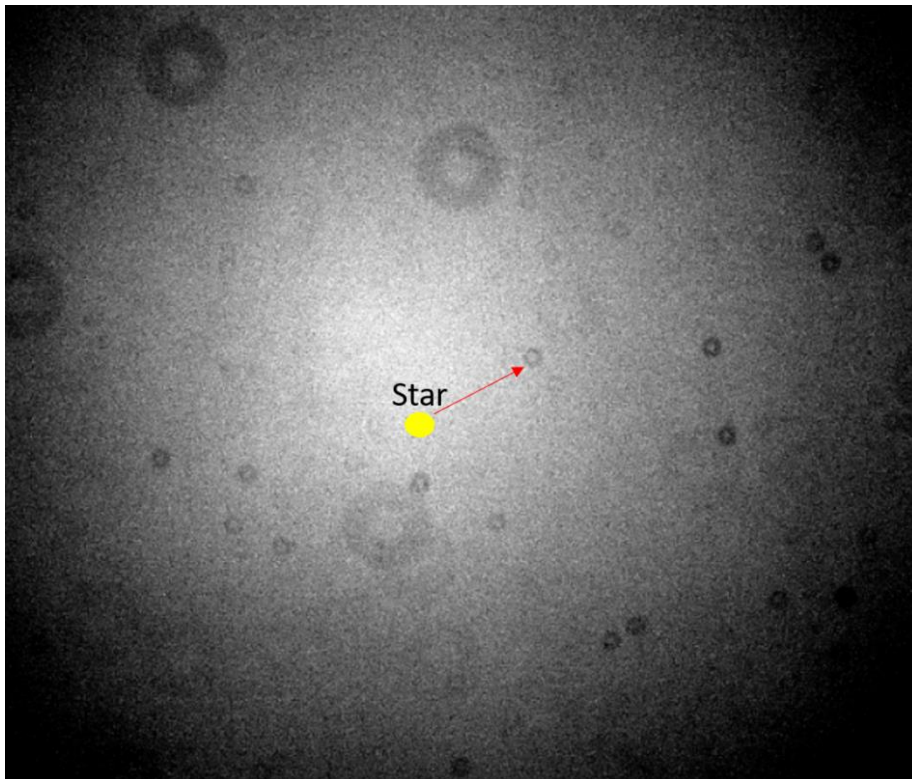


Figure 2. Star Movement after a Meridian Flip

Flat fields should ideally be created before or after each observing session, and certainly when there is any change in the imaging chain.

The following are common techniques for generating flat fields from which a master flat can then be created:

1. Twilight flats – flats are taken at dawn and dusk. Because of the speed that sky lighting conditions change, it is often cumbersome to take a good set of flats, especially if this has to be done for multiple filters. In some cases, the flats may show stars if the exposure time is too long. Homemade diffusers using a white T-shirt have been a popular way to mitigate this problem.
2. Light boxes – homemade light boxes have been used by some amateur astronomers to create flats. However, using this technique to produce a uniform light field is sometimes challenging.
3. Electroluminescence panels - although at some cost, the technique has several advantages: it can create a relatively good uniform light field, its brightness can be changed to accommodate different filters, and flats may be taken at the observer's convenience.
4. Observatory flats – this technique used in permanent observatories consists of the telescope being pointed at a lit white panel on the wall of the observatory. The efficacy of this technique varies widely with the nature of the white panel, ambient lighting, etc.

6.3.3. Creation of Master Files

Image calibration eliminates the effects of the following underlying factors that affect the precision of the measurements: bias, dark current, and dust donuts and vignetting. The following are best practices for dealing with each of these factors:

1. Bias files should be taken at some time before or after the observing session. These are then used to create a master bias file, ideally using median combine.
2. Dark files should best be taken at the end of the observing session. The reason for taking them at the end of the observing session is to make sure that they are taken at the same temperature as the science images. A master dark file is then created from them, again using median combine.
3. Flat files should be taken either at the beginning or end of the observing session. Since flat files themselves have dark current and are at a different exposure time than the science images, they need to have dark current removed. Rather than creating a master dark specifically to make dark correction for the flats, another approach is to use the same master dark file created for the science images, but scale it to the exposure time of the flat files. Software such as AIJ, has such a scaling feature. Section 6.3.2 above describes the best practices for creating flat files.

6.3.4. Updating FITS Header Information

During the image calibration phase, some software packages such as AIJ allow the user to update the FITS headers in the science images with information such as the equivalent BJD_{TDB} times of the observation. If not included in the FITS header by the image capture software, other important information such as AIRMASS can be included as well. As will be seen later, AIRMASS is one of the more commonly used detrend parameters during the transit modeling process.

6.4. Aperture and Differential Photometry Phase

As was mentioned in Section 3, the exoplanet transit method is all about comparing the relative change in brightness between the target star and a set of suitable comparison stars. Before this comparison can be done, however, the brightness of each star needs to be adjusted for any photon counts due to the background sky that might be affecting each particular star. This is done using a technique called aperture photometry. The term used after such adjustment is made is referred to here as “net integrated counts” (or just “integrated counts” for short). Once this adjustment for background sky is done, the relative change in integrated counts between the host star and the comparison stars can then be obtained. This process is called differential photometry. The best practices associated with aperture and differential photometry are described below.

6.4.1. Aperture Photometry

Aperture photometry involves defining both the “aperture” of a certain radius around a star, as well as an outer “annulus.” The idea of the annulus is to measure the sky background around the star. Figure 3 depicts an aperture of radius 9 and an annulus starting at 15 pixels from the centroid of the star and ending at 23 pixels from the centroid.

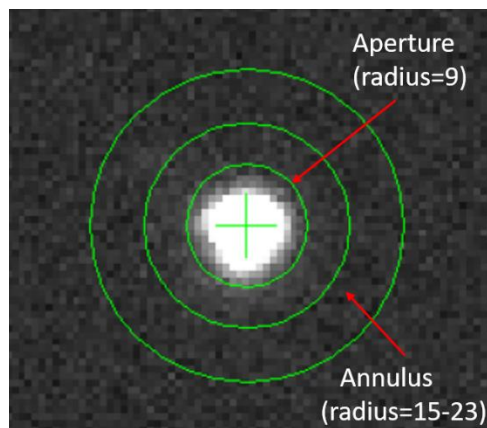


Figure 3. Aperture and Annulus

In order to compensate for background sky contribution, the ADU counts per pixel in the annulus are used to adjust the ADUs in the aperture. Some software such as AIJ also has the ability to detect and adjust for any faint stars that might happen to be in the annulus and therefore bias the background sky counts. As will be described later, the radii settings initially set for the aperture and annulus may be changed after an exoplanet model fit is done to further optimize the fit.

Section 7.5.1 describes how AIJ can be used to select the initial size of the aperture and annulus.

6.4.2. Differential Photometry

Differential photometry involves applying aperture photometry on the target star and multiple comparison stars and then computing the change in the target star's integrated counts relative to the total integrated counts of the comparison stars. The following are the best practices for selecting suitable comparison stars:

1. Ideally, at least 8 comparison stars should be chosen whose magnitudes are as close as possible to that of the target star –typically within +/- 50% of the integrated counts of the target star. If this is not possible, then an ensemble of comparison stars should be selected such that the average of their aperture counts is close to that of the target star. Also, when trying to determine if there are any sources causing a false positive, the observer may be instructed to test for the occurrence of a transit event for all stars within a specified radius of the target star.
2. The comparison stars should ideally be of similar stellar type to the target star and close in distance to the target star in order to minimize the differences in atmospheric extinction. However, if the transit modeling software is able to “detrend” the effects of AIRMASS, such as is possible with AIJ, then choosing comparison stars of similar brightness to the target star is more important than choosing stars of similar stellar type.
3. The comparison stars should not be inherently variable. This can later be determined by viewing the light curve of each comparison star as described in the next section, or by using information from the AAVSO's Variable Star Plotter utility (AAVSO, 2017).

The results of the differential photometry phase will be a Measurements file that has, as a minimum, for each image: the timestamp of the image, the change in integrated counts of the target star (relative to the comparison stars), and associated errors. Depending upon the differential photometry software, other valuable data could include the change in integrated counts of each comparison star relative to the other comparison stars, as well as associated errors, and changes in the X,Y pixel coordinates of the target and comparison stars.

7. Using AstroImageJ

The rest of this Guide describes the use of AIJ for the post-processing of science images and for conducting exoplanet model fitting. The use of AIJ assumes that the user has already downloaded (and installed) the latest version of AIJ and has read the AIJ User Guide, both of which are available at: <http://www.astro.louisville.edu/software/astroimagej/>.

The user is encouraged to regularly check for an AIJ software update. This is done by clicking on Help in the upper right corner of the main AIJ Toolbar (see Figure 4) and then selecting “Update AstroImageJ...”. An “Upgrade To” box then appears. **IMPORTANT:** If a daily build exists, please load it. This can be found as the first entry in the Upgrade To box.

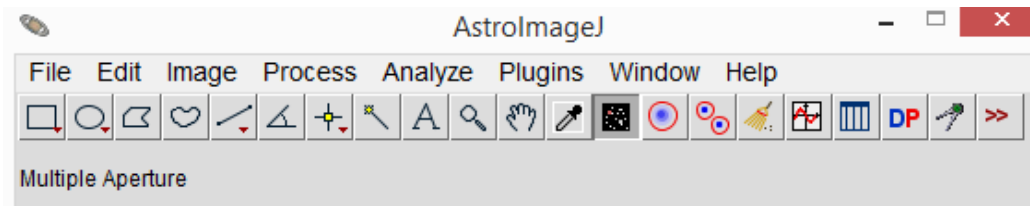


Figure 4. AIJ Toolbar

Data from actual exoplanet transits using Version 5.1.3.00 of AIJ will be used in the examples throughout the rest of this Guide. Both the calibration files and original images for the WASP-12b example, as well as the associated AIJ plot configuration file, can be found at www.astrodennis.com.

7.1. Loading Images into AIJ

A single image or a sequence of images can be loaded into AIJ.

To open a single image, select File->Open from the AIJ Toolbar (Figure 4) and then select the desired file. The Image Display screen (see Figure 5) then appears. One example of useful information that can be obtained from any one of the science images are the contents of its FITS header. This information can be obtained by selecting Edit->FITS header on the top of the Image Display screen. Many of the operations on the Image Display Screen that are described below for a sequence of images can also be applied to a single image.

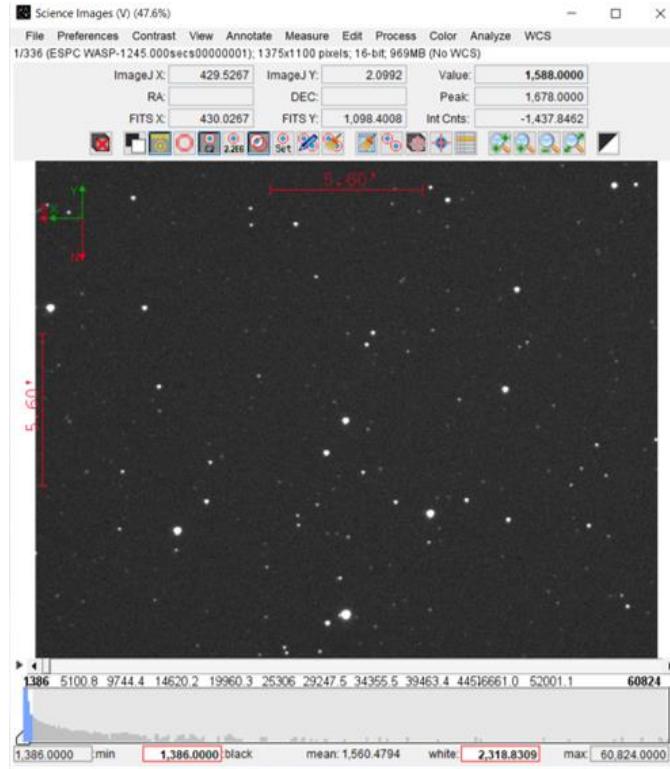


Figure 5. Image Display Screen

A set of images can be loaded into what is called an AIJ “stack.” Each image in the stack is called a “slice.” The stack is an active set of images that various AIJ functions can be applied to. From the AIJ Toolbar select File->Import->Image Sequence. A screen similar to the one in Figure 6 appears. Then select the folder containing the desired image files to be loaded. Image files can also be dragged and dropped onto the main AIJ toolbar to load them into a stack.

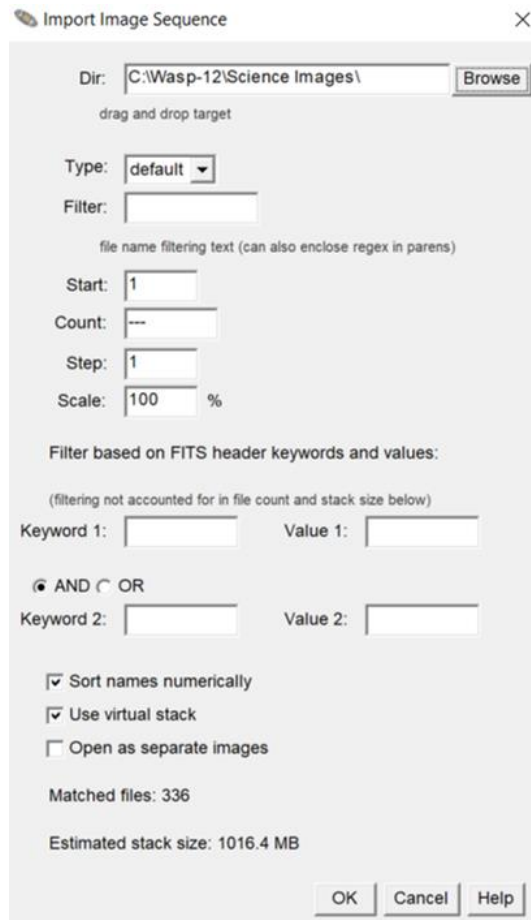


Figure 6. Import Image Sequence Screen

If the computer running AIJ has sufficient memory to hold all images in the stack, then the “Use virtual stack” selection on the Import Image Sequence screen can be unchecked, thereby causing AIJ to run faster since the images can be directly accessed from memory. If an out-of-memory message appears in this case, then more memory can be allocated to AIJ by performing the following:


1. From the main AIJ Toolbar, go to Edit->Options->Memory and Threads...
2. Change the Maximum memory value to a larger value.

Next, the OK button depicted in Figure 6 is selected. This creates an AIJ stack of the selected images. The Image Display (Figure 5) then shows the first image in the stack.

As seen in Figure 6, other options exist for filtering which files from the selected folder should be entered into the stack. As an example, for an observation run using alternating filters to conduct a chromaticity check (e.g., Blue, Red, Blue, Red, etc.), there are three different ways that images for a particular filter could be inserted into the stack:

1. If the name of the filter is embedded in the filename, then that name could be placed in the Filter entry and any files with that filter name would be included in the stack.
2. The Start and Step values could be used to select the desired filter. For example, Start=1 and Step=2 would include only the runs with the Blue filter, and Start=2, Step=2 would include only those runs with the Red filter.
3. If the filter name (e.g., Blue) is associated with a FITS header keyword (e.g., FILTER), then a Keyword entry of FILTER with a Value of Blue, would only include those file images that had Blue as the value for FILTER in the FITS header.

7.2. Calibrate Science Images

The Data Processing (DP) function of AIJ can first be used to calibrate the science images taken during the Imaging Phase. Note: Before proceeding with this section, it is strongly suggested that the reader review Section 6 (DP User Interface) of the AIJ User Guide. The DP function is initiated by clicking on the  icon from AIJ's main Toolbar. Figure 7 is an example of one of the two screens that then appears.

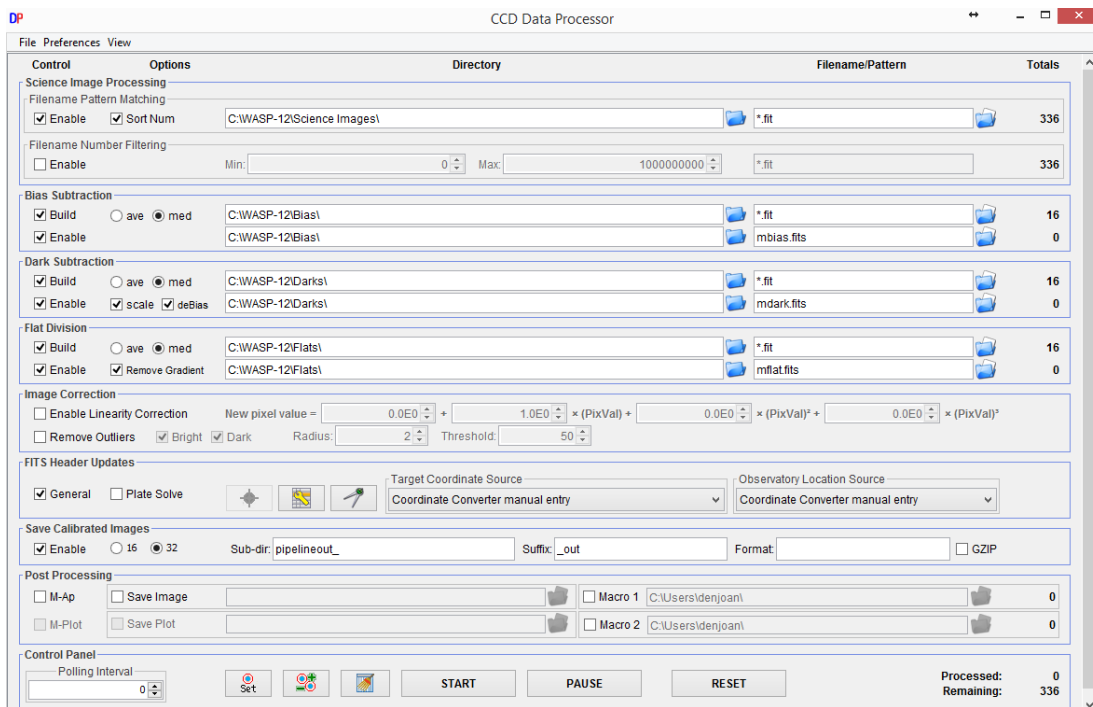


Figure 7. CCD Data Processor Screen

An example of the other screen that appears is depicted in Figure 8, which may initially be covering the CCD Data Processor Screen.

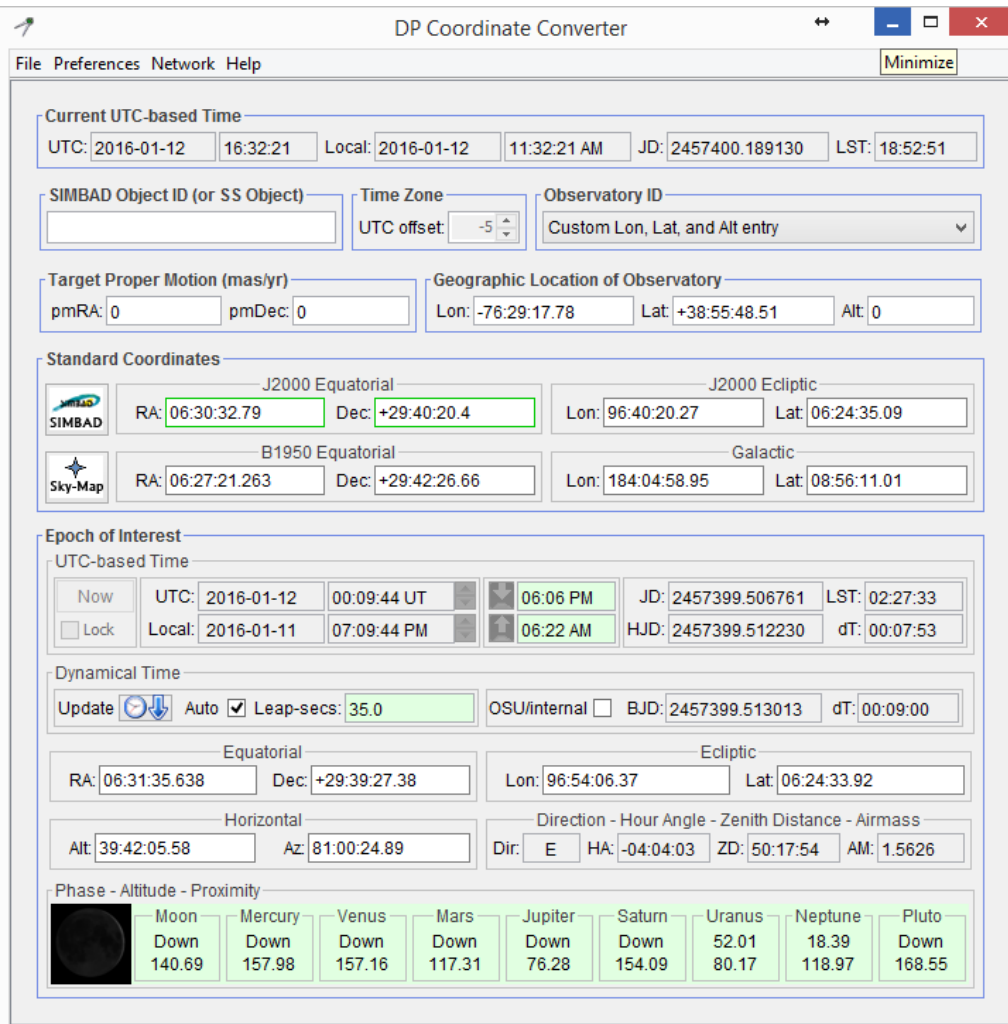


Figure 8. DP Coordinate Converter Screen

The purpose of the CCD Data Processor screen is to calibrate the science images using the bias, dark, and flat field files previously captured. There are several ways, however, in which the master bias, dark, and flat files used for calibration can be created. For example, the master files can be created in separate runs of the CCD Data Processor, and then one final run specifies the master files being used. In addition, the user may use other programs for accomplishing the calibration and may simply decide to use AIJ to just update the FITS headers of the calibrated files, which process is described below. In the example depicted in Figure 7 and described below, AIJ uses one run to accomplish everything: master files are first created from individual bias, dark and flat files, these master files are then used to calibrate the science images, and, finally, the FITS headers of the resulting calibrated files are updated. In the example below, the original dark files and science images had an exposure time of 45 seconds and the flat field files had an exposure time of 3 seconds.

7.2.1. Specifying Science Images and Calibration Files

The first step in conducting image calibration is to specify where AIJ can find the science images and the calibration files.

Under the Science Image Processing section on the CCD Data Processor screen, the “Enable” and “Sort Num” boxes are checked and the directory is entered where the science images reside (this can also be done by clicking on the folder icon and selecting the appropriate subdirectory). Next, the appropriate file extension with the wildcard indicator “*” for the filename path is entered. If the filename path and extension for the science images have been properly entered, then the Totals count to the right should be correct.

The above method should also be used for specifying the subdirectories and file extensions for the bias, dark and flat files. For each of these sets of calibration files, a subdirectory and full filename (not just extension) can be entered for their respective to-be-created master files (other options for specifying the destination of the master files can be found by “hovering” over the subdirectory field). As seen in Figure 7, a master dark called mdark.fits will be created in the same subdirectory where the individual darks are found.

The Build and Enable checkboxes for each of the calibration types should also be checked, and the choice made for whether average (ave) or median (med) combine should be used to create the masters. If the darks are to be scaled and used as flat darks, then the “scale” and “deBias” boxes should be checked.

There are variations to the above. For example, to use already created masters, the “Build” boxes do not have to be checked.

Note: It is important that the “Remove Outliers” option is NOT selected when differential photometry is being done and that the Polling Interval under the Control Panel is set to 0. Also, unless the “Enable” option for Filename Number Filtering or the “Enable Linearity Correction” option are being used (see Section 6.3.2.1 and Section 6.3.2.5, respectively of the AIJ User Guide), then they should not be enabled.

7.2.2. Updating FITS Header Information

AIJ has two methods for obtaining some essential information such as AIRMASS, BJD_{TDB} times, etc., which will be useful during the Photometry, Plotting, and Modeling Phase. The first method is to update the Measurements file that is created after differential photometry has been applied to the calibrated images. This method is described in Section 7.6 below. This method, however, does not update the FITS headers of the calibrated files, so each time a new differential photometry measurement is performed on the calibrated images, this update would have to take place again. It should be noted that some camera capture software will include AIRMASS in the FITS header, but most likely not BJD_{TDB} .

The second method, which occurs during the Calibration Phase, is to include this information directly in the FITS headers of the calibrated files. Thus, at the time the calibration files are being corrected with any bias, darks, and flats, their FITS headers are being updated as well. With this method, multiple modeling runs can be made with different photometry settings, without having to update the Measurements file after each run with information such as AIRMASS and BJD_{TDB} time.

To update the FITS headers during the calibration process, the user should select General under the FITS Header Updates section of the CCD Data Processor screen (see Figure 7). The DP Coordinate Converter Screen then appears (Figure 8), if it isn't already open.

To update the FITS headers, AIJ needs the RA and DEC coordinates of the target, as well as the location where the observation was conducted. As described below, this information can be manually entered, or AIJ can automatically extract this data from the FITS headers if it was included there by the user's image capture software.

No matter which method is used by AIJ to obtain the target's coordinates and the observation location, the user should select Auto under the Dynamical Time section of the DP Coordinate Converter Screen. This will allow AIJ to account for the appropriate number of additional leap seconds when it is doing its time conversions to BJD_{TDB} .


It is also important that the raw science images have information in their FITS headers about the date/time of the start of the observation, as well as the exposure time. Sections 6.3.2.6.1 and 6.3.2.6.2 of the AIJ User Guide describe the acceptable FITS header keywords that AIJ can use to obtain this information.

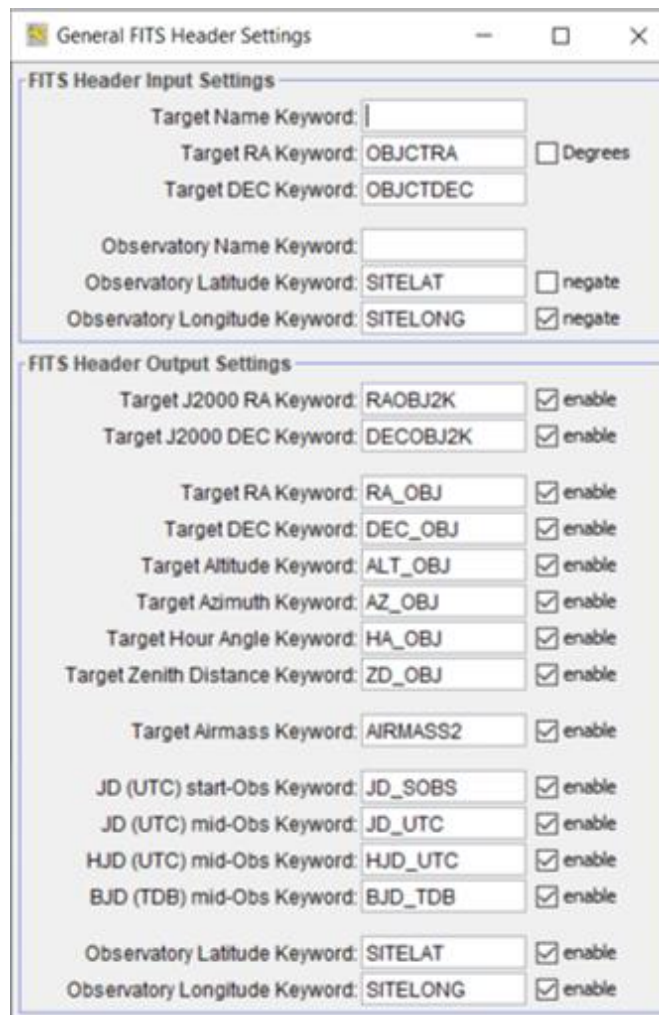
7.2.2.1. Manual Entry of Target and Observation Location Information

In the case of manual entry of the target's coordinates and/or the observation location, the user would select "Coordinate Converter manual entry" under either or both the Target Coordinate Source box and the Observatory Location Source box. On the DP Coordinate Converter screen, the user would then enter the Lon (Longitude), Lat (Latitude), and Alt (Altitude) fields in the Geographic Location of Observatory section and/or enter the target's RA and DEC fields in the J2000 Equatorial section. A description of how the user can create an entry for the user's observatory, in a list of pre-defined observatories, can be found under "Customize Observatory Data," which can be reached from the Help tab on the DP Coordinate Converter screen. The user can then later access this stored information via the Observatory ID pull-down list on the DP Coordinate Converter screen in order to automatically populate the entries for the Geographic Location of Observatory.

7.2.2.2. Automatic Extraction of Target and Observation Location Information

If RA and DEC coordinates are already part of the image's FITS header, the user can have AJI automatically extract this information by selecting "FITS header target RA/DEC (2000)" under the Target Coordinate Source box. Likewise, if the observation location is already part of the image's FITS header, the user can select "FITS header longitude and latitude" under the Observatory Location Source box.

Next, the user would select the  icon on the CCD Data Processor screen. The General FITS Header Settings screen then appears (Figure 9).



FITS Header Input Settings	
Target Name Keyword:	<input type="text"/>
Target RA Keyword:	OBJCTRA <input type="checkbox"/> Degrees
Target DEC Keyword:	OBJCTDEC
Observatory Name Keyword:	<input type="text"/>
Observatory Latitude Keyword:	SITELAT <input type="checkbox"/> negate
Observatory Longitude Keyword:	SITELONG <input checked="" type="checkbox"/> negate

FITS Header Output Settings	
Target J2000 RA Keyword:	RAOBJ2K <input checked="" type="checkbox"/> enable
Target J2000 DEC Keyword:	DECOBJ2K <input checked="" type="checkbox"/> enable
Target RA Keyword:	RA_OBJ <input checked="" type="checkbox"/> enable
Target DEC Keyword:	DEC_OBJ <input checked="" type="checkbox"/> enable
Target Altitude Keyword:	ALT_OBJ <input checked="" type="checkbox"/> enable
Target Azimuth Keyword:	AZ_OBJ <input checked="" type="checkbox"/> enable
Target Hour Angle Keyword:	HA_OBJ <input checked="" type="checkbox"/> enable
Target Zenith Distance Keyword:	ZD_OBJ <input checked="" type="checkbox"/> enable
Target Airmass Keyword:	AIRMASS2 <input checked="" type="checkbox"/> enable
JD (UTC) start-Obs Keyword:	JD_SOBS <input checked="" type="checkbox"/> enable
JD (UTC) mid-Obs Keyword:	JD.UTC <input checked="" type="checkbox"/> enable
HJD (UTC) mid-Obs Keyword:	HJD.UTC <input checked="" type="checkbox"/> enable
BJD (TDB) mid-Obs Keyword:	BJD.TDB <input checked="" type="checkbox"/> enable
Observatory Latitude Keyword:	SITELAT <input checked="" type="checkbox"/> enable
Observatory Longitude Keyword:	SITELONG <input checked="" type="checkbox"/> enable

Figure 9. General FITS Header Settings Screen

The appropriate keywords in the image's FITS header associated with this information should then be included in the Target RA Keyword and Target DEC Keyword entries under the FITS Header Input Settings portion of the screen (see Figure 9). Common keyword pairs for this information are: RA_OBJ, DEC_OBJ and OBJCTRA, OBJCTDEC; however, the user should

confirm which keyword pair is placed in the images' FITS header by the user's image capture software.

Likewise, the appropriate keywords in the image's FITS header associated with this information should be included in the Observation Latitude Keyword and Observation Longitude Keyword entries. SITELAT and SITELONG are such keywords. NOTE: some image capture software, such as SkyX Pro, might put a positive number in the FITS header for longitude even though it is West longitude (West longitude is typically shown with a negative sign, unless it is expressed as Elongitude – namely, total degrees from 0 longitude.). If West longitude is a positive number in the user's FITS header, then the user should check the “negate” box, as seen in Figure 9, to indicate to AIJ that the number found in the FITS header should really have a negative sign associated with it.

The FITS Header Output Settings portion of the screen indicates which items will be added to the calibrated images (indicated by those that have “enabled” checked). Note: it is suggested that all the default keywords stay as “enabled.”

IMPORTANT: If an AIJ update is performed, the user is advised to make sure that the entry for the “BJD (TDB) mid-Obs Keyword” on the General FITS Header Settings screen is set to BJD_TDB (earlier versions of AIJ set this entry value to BJD_UTC).

7.2.2.3. WCS Information

Finally, although not done in this example, the World Coordinate System (WCS) coordinates for each star in each image can be obtained by selecting the Plate Solve option on the CCD Data Processor Screen. It should be noted, however, that this process could take a long time and in many cases is not necessary (see Section 7.4 below for obtaining WCS coordinates for selected images).

7.2.3. Begin the Calibration Process

Using the example settings in Figure 7, when the START button is selected, the DP routine will automatically perform the following steps:

1. Create a Master Bias (mbias.fits) from the 16 bias files.
2. Create a Master Dark (mdark.fits) from the 16 dark files. Since deBias is selected, correct this Master Dark with the Master Bias. Thus, the Master Dark will have bias removed from it.
3. Create a Master Flat (mflat.fits) using the 16 flat files in the following manner:

- a. first calculate a scaling factor that represents the ratio of the exposure times of the flat fields to the exposure time of the original dark files (in this example, the scaling factor would be $0.0667 = 3 \text{ sec} / 45 \text{ sec}$);
 - b. perform bias correction using the Master Bias;
 - c. perform dark correction using the Master Dark, scaled with the scaling factor;
 - d. remove gradients;
 - e. normalize the calibrated flats.
4. The FITS headers of the calibrated files are updated.
 5. Calibrate each science image using the resulting Master Bias, Master Dark, and Master Flat. An Image Display is seen for each image as it is being calibrated.
 6. The calibrated science images are stored in a calibration subdirectory under the subdirectory that held the Science Images. In this example, the subdirectory will be called pipelineout and its files will have a suffix of _out. Note: it is best to check the 32 bit option for these saved calibrated files.

7.2.4. Real-time Operation

In addition to conducting image calibration after the observation, AIJ is also capable of operating “in real-time” if the Polling Interval is set to a non-zero value and the appropriate options are selected in the Post Processing section. In this case, at the specified Polling Interval rate, AIJ will automatically check the science image directory for newly added files that match the file pattern matching and number filtering criteria specified on the CCD Data Processor screen. AIJ will then calibrate them, will optionally conduct differential photometry on them, and will optionally update the light curve (see the checkboxes under Post Processing on the CCD Data Processor screen for selecting these options).

7.2.5. Additional Options


Section 6 of the AIJ User Guide provides other options available for the CCD Data Processor screen.

7.3. Loading Calibration Images

After calibration, the images in the calibration subdirectory can be loaded into an AIJ stack (see Section 7.1 on how to load a set of images).

In order to make sure that the field-of-view (FOV) indicators are correct for both the vertical and horizontal axes on the Image Display Screen for the calibration images, the correct X and Y pixel scales should be set. Pixel scales will have been set correctly if WCS coordinates were

already found by using either the Plate Solve option on the CCD DP Processor screen (see Section 7.2.2.3) or one of the WCS->Plate solve options on the Image Display screen (see Section 7.4). Alternatively, correct pixel scales can be manually entered by selecting, at the top of the Image Display Screen, “WCS->Set pixel scale for images without WCS...”, and then entering the correct X and Y pixel scale values.

The slider below the image can then be used to move through all the images in order to find ones that should be eliminated due to excessive cloud cover, poor guiding, or other anomalies. If images show increasing degrees of misalignment, see Section 7.5.3 how to correct for this. Poor images can be deleted by bringing up that particular image on the Image Display and then simply selecting the “delete currently displayed slice”  icon in the upper left of the Image Display. Alternatively, Edit->Stack->Delete can be selected from the menu bar on the Image Display. It is advisable, however, to move such poor images from the calibration subdirectory where they reside to a separate “Quarantined Images” subdirectory. This is so that if the differential photometry needs to be redone on files in the calibration subdirectory, then the user does not have to go through this image elimination process again.

7.4. Plate Solving Using AIJ

Plate solving means associating stars in an image with their RA and DEC coordinates. Optionally, this information can also be permanently stored back into the image’s FITS header for possible later use. The information stored in the FITS header uses WCS information; this information allows subsequent runs to identify the RA and DEC coordinates of selected stars.

The following are examples where it might be desirable to use one or more plate solved images:

1. it may be useful to plate solve an image to locate the exact location of the target star in a crowded field of stars;
2. if images are misaligned throughout the observing session, or a meridian flip has occurred, it may be useful to track the location of particular stars from one image to the next during the differential photometry process using their RA and DEC coordinates.

Images that contain WCS information from other software can be used by AIJ, or AIJ itself can be used to plate solve one or more images in the image stack. This is done by selecting from the Image Display menu “WCS->Plate solve using Astrometry.net (with options)...” A screen similar to the one in Figure 10 then appears.

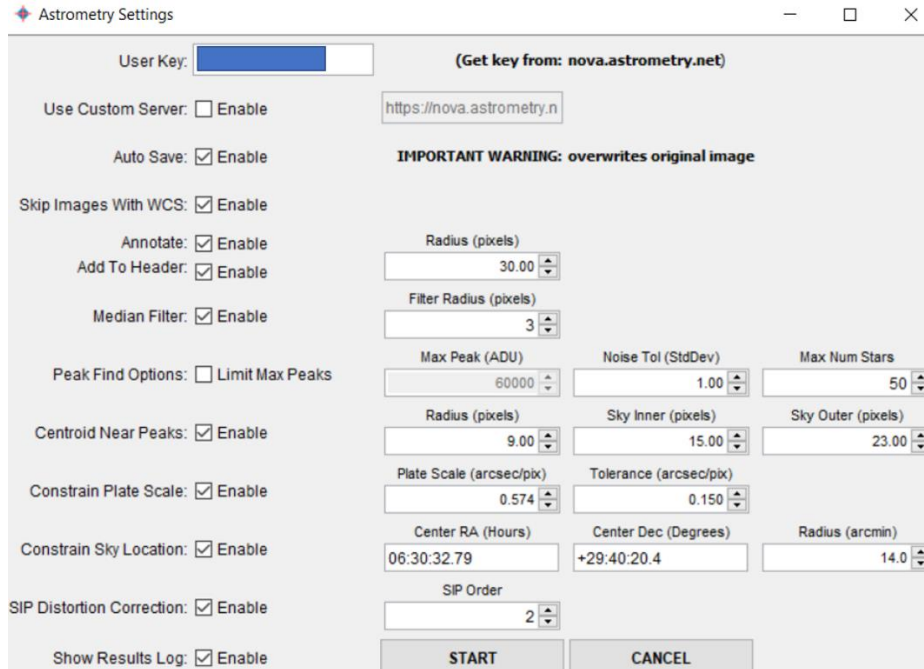


Figure 10. Astrometry Settings Screen

AIJ can then use either the online astrometry.net facility for plate solving, or Windows users can use a local version that does not require an online connection. The following describes each of these alternatives.

7.4.1. Astrometry.net Alternatives

Alternative 1: Plate Solving Using the Online Version of Astrometry.net

For this alternative, an Astrometry.net key is first obtained. This is done by logging in at http://nova.astrometry.net/signin/?next=/api_help using, for example, the user's Google login information. The key can then be found under My Profile under the Dashboard dropdown. It is called "my API key." This key is then entered into the User Key field on AIJ's Astrometry Settings Screen.

Alternative 2: Plate Solving Using a Local Version of Astrometry.net

Windows users can use an alternative to the online version of astrometry.net to perform plate solving. In this case, AIJ uses a local astrometry.net server. The server, developed by Andy Galasso, is called ansvr. It can be installed by going to <http://adgsoftware.com/ansvr/> and following the installation instructions there. Once installed, plate solving can be done locally by enabling "Use Custom Server" on the Astrometry Settings Screen (see Figure 10).

7.4.2. Astrometry Information


After the appropriate alternative for invoking astrometry.net is chosen, the following other entries should be made on the Astrometry Settings Screen:

1. “AutoSave” should be checked if the user wishes that the FITS headers of the original image files are to permanently updated with the appropriate WCS information.
2. Selection of the “Annotate” option allows AIJ to draw around stars found in SIMBAD, a circle of size “Radius (pixels),” along with an annotation of the star name. If selected, “Add To Header” will cause these annotations to be added to the image’s FITS header.
3. The slice number(s) of the image(s) in the stack to be plate solved should be entered in the Start Slice and End Slice fields.
4. The radii of the aperture and annulus settings that will be used during the differential photometry process (see Section 7.5.1 below) should be entered in the Radius, Sky Inner, and Sky Outer fields.
5. The correct Pixel Scale value for the user’s imaging system should be then be entered, as well as some tolerance for its precision.
6. Next, the approximate RA and DEC coordinates of the center of the image, as well as some search radius for suitable stars that can be used during the plate solve process. The user might try first starting with the width of the image, and then reduce it from there.
7. All other values and checkboxes can be set as they appear in Figure 10. When START is selected, the plate solving process will begin

7.5. Conduct Differential Photometry

7.5.1. Select Appropriate Aperture and Annulus Settings

The first step in the differential photometry process is to define the appropriate radius of the aperture and the radii of the inner and outer rings of the annulus. This is done as follows:

The  icon on the Image Display screen is selected causing the Multi-Aperture Measurements screen to be displayed (Figure 11) .

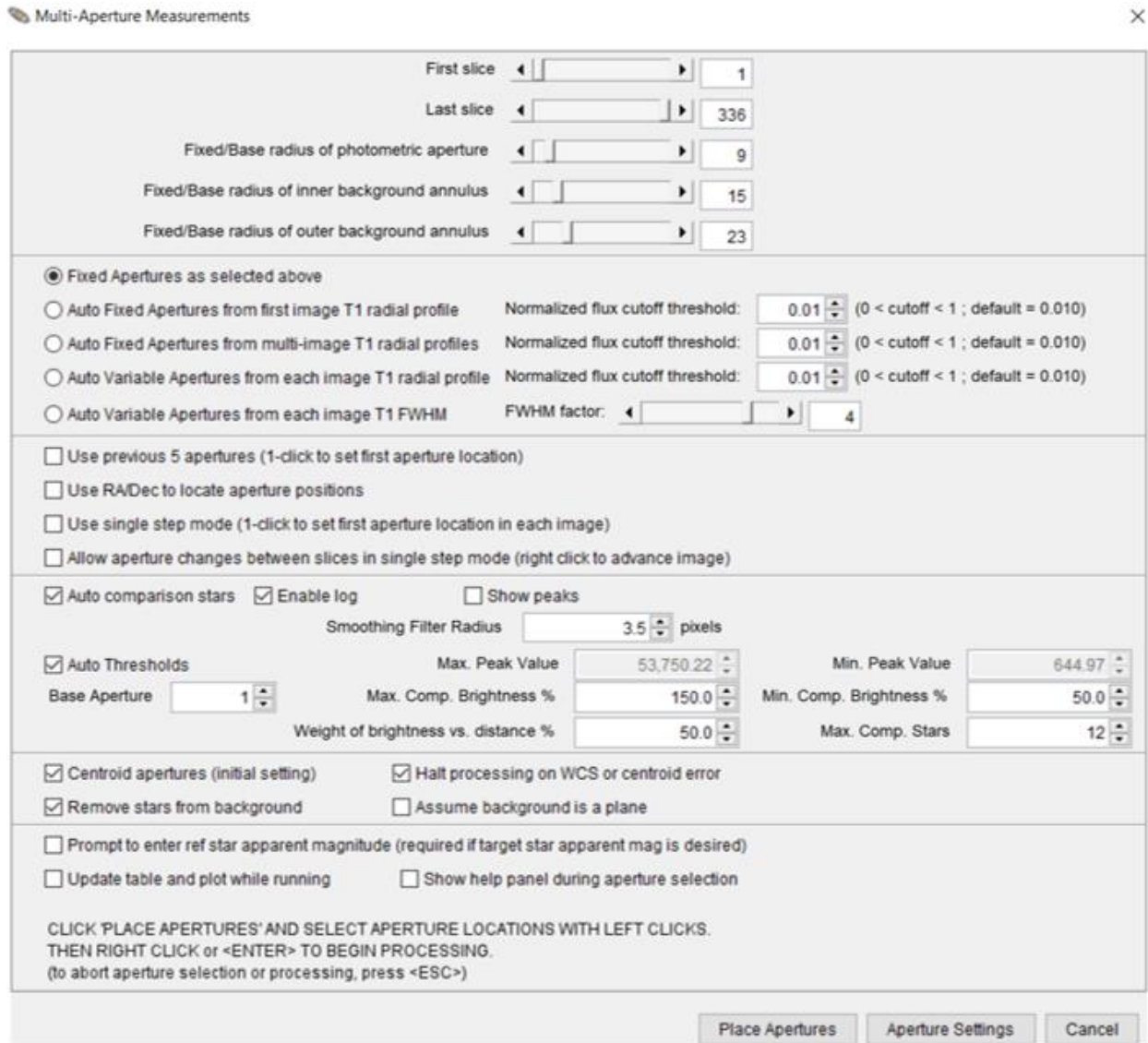


Figure 11. Multi-Aperture Measurements Screen

The radii of the aperture and annulus can then be appropriately set using any one of three methods.

Method 1. The initial radii settings can be determined using the Seeing Profile screen associated with the target star (see Figure 12) and the Fixed Apertures option then can be used to set these values. The Seeing Profile screen appears when the cross-hair is placed on the target star and the user holds the ALT key down while clicking on the star (note: that ALT-clicking the star does not keep the cross-hairs on the star). The radius shown for the Source and the beginning and ending values for the Background can then be used for the initial aperture radius, and the inner and outer annulus radii settings, respectively.

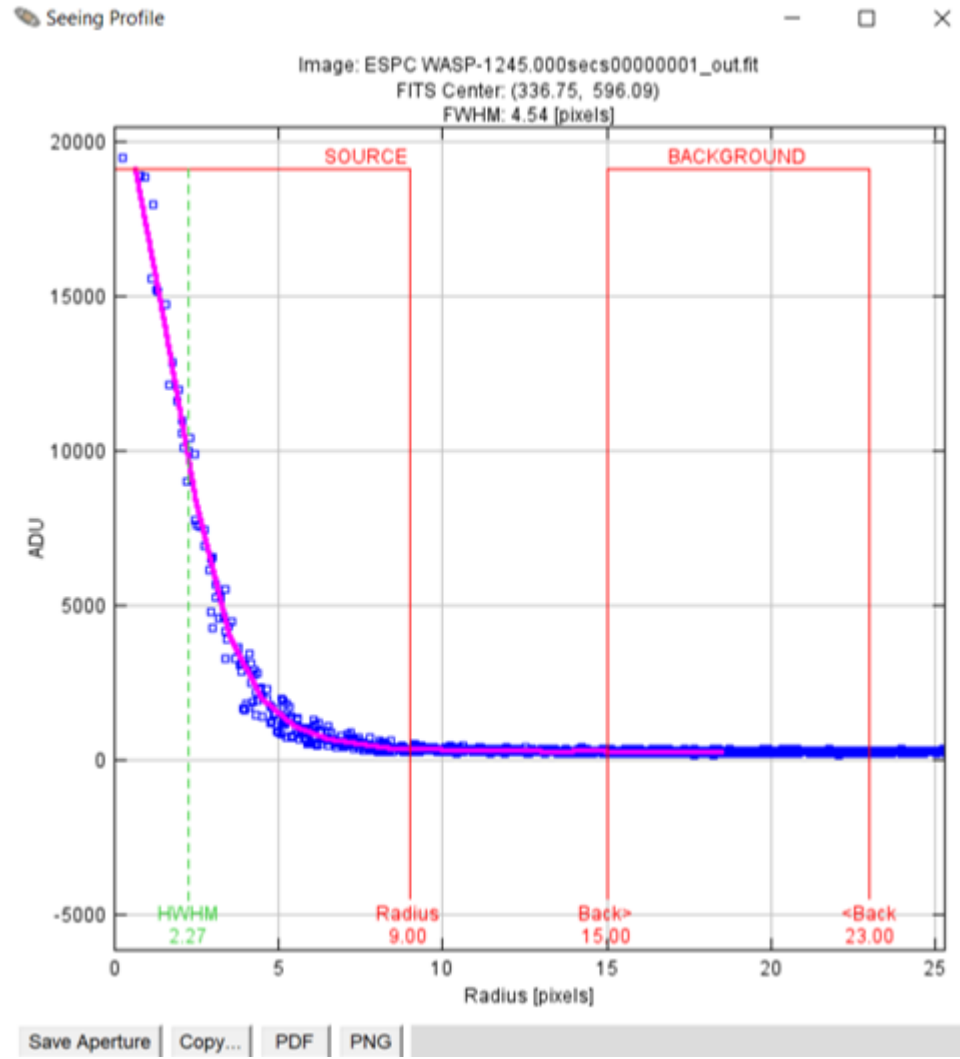




Figure 12. Seeing Profile Screen

Method 2. As seen in Figure 11, several options can be selected for automatically setting the aperture and annulus radii. These options include:

1. setting the same aperture size for all images based on the target star's profile only in the first image;
2. setting the same aperture size for all images based on the target star's profile across all images;
3. varying the aperture sizes from image-to-image based on the target star's profile in each image;
4. varying the apertures sizes from image-to-image based on the target star's FWHM.

For Options 2. and 3., a summary screen appears showing the distribution of the aperture and annulus radii across all images. In addition, the slider bar on this summary screen can be used to view Seeing Profiles specific for each of the images.

Method 3. Finally, the initial aperture/annulus settings can be determined by using the ones that maximize the SNR of the target star. AIJ can be used to determine the SNR of the target star in the following manner:

1. Click on the Set aperture settings icon  on the Image Display screen. Set the aperture and annulus radii to some initial settings and then click on OK.
2. Click on the Single Aperture Photometry icon  on AIJ's Toolbar. Place the resulting concentric circles onto the target star in the Image Display and left click.
3. This will produce a new Measurements table that should include the SNR measurement under the column Source_SNR. Each subsequent change in aperture settings and Single Aperture Photometry selections will add a new row to this table.

Note: each such newly created (extraneous) row in the Measurements table should then be deleted before the Measurements table is used for transit modeling. This is done by highlighting the row(s) to be deleted in the Measurements table and then selecting Edit->Cut from the Measurements table menu bar.

Any of the above methods can be used for obtaining an initial set of aperture and annulus settings. The final settings of the aperture and annulus radii should be those that minimize the Root Mean Square (RMS) of the residuals of the light curve that is created during the transit model fit. RMS is a measure of how well the model “fits” to the observed data. This implies that multiple runs of the model fit, as described in Section 7.11 below, would need to be run with different values for the aperture and annulus radii settings.

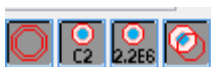
7.5.2. Select Comp Stars and Begin the Differential Photometry

Section 6.4.2 describes the guidelines for selecting suitable comp stars. However, AIJ offers an automated process for doing so. In particular, the “Auto comparison stars” option (see Figure 11) allows the user to set the maximum number of comp stars to be selected, as well as a user-specified aperture number for the target (typically 1). In addition, the user can set the following criteria for AIJ to use in automatically selecting the comp stars:

1. either a user-specified or an AIJ-generated maximum and minimum peak ADU value
2. the brightness of the star relative to a user-specified % above and below the brightness of the target star
3. a % weight applied to the brightness of the star relative to that of the target vs. the distance of the star to the target.

In scanning through the images in the stack, it may appear that they are gradually offset from each other and therefore not all aligned. Sections 7.5.3 and 7.5.4 below show how to deal with varying degrees of misalignment, as well as a meridian flip.

The user should first enable the following four icons on the Image Display menu bar:



These selections allow for the aperture/annulus rings to be displayed with target and comp star names and associated integrated counts, and helps to automatically position the aperture/annulus rings on each star's centroid. Note that in a crowded field, it may be appropriate to disable displaying of the annulus rings and integrated counts by deselecting the first and third of the above four icons.

Next, clicking on the Aperture Settings tab on the Multi-Aperture Measurements Screen (Figure 11), brings up the Aperture Photometry Settings screen (Figure 13). On this screen, the Howell centroiding method would typically be used for faint stars. Also, the user should enter a comma-separated list of keywords for any FITS header values that the user would like extracted and added to the Measurements table. In addition, the appropriate values for the CCD's gain, readout noise and dark current should be entered. Finally, the appropriate settings for Saturation and Linearity warnings should be set. All of the other checkboxes could be kept as shown. The user would then select OK, which takes the user back to the Multi-Aperture Measurements Screen.

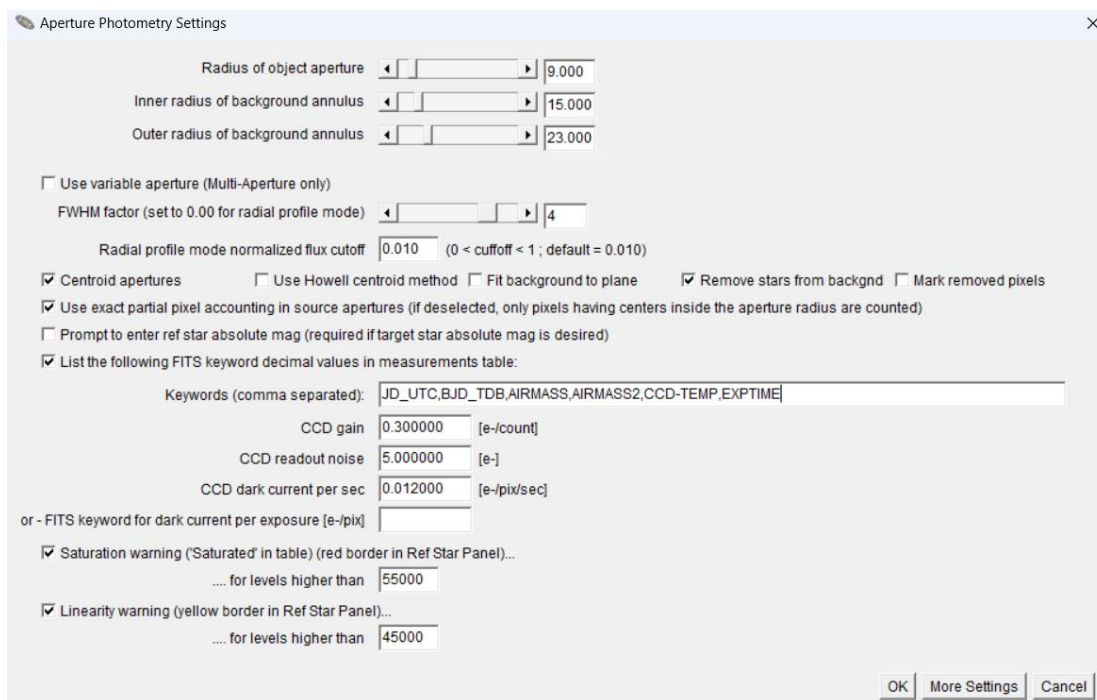


Figure 13. Aperture Photometry Settings Screen

The user would then select Place Apertures and then place and click the floating concentric circles on the target star and the comp stars if the Fixed aperture option was chosen, or just on the target star if any of the Auto aperture options were chosen. The Image Display would then appear similar to that in Figure 14.

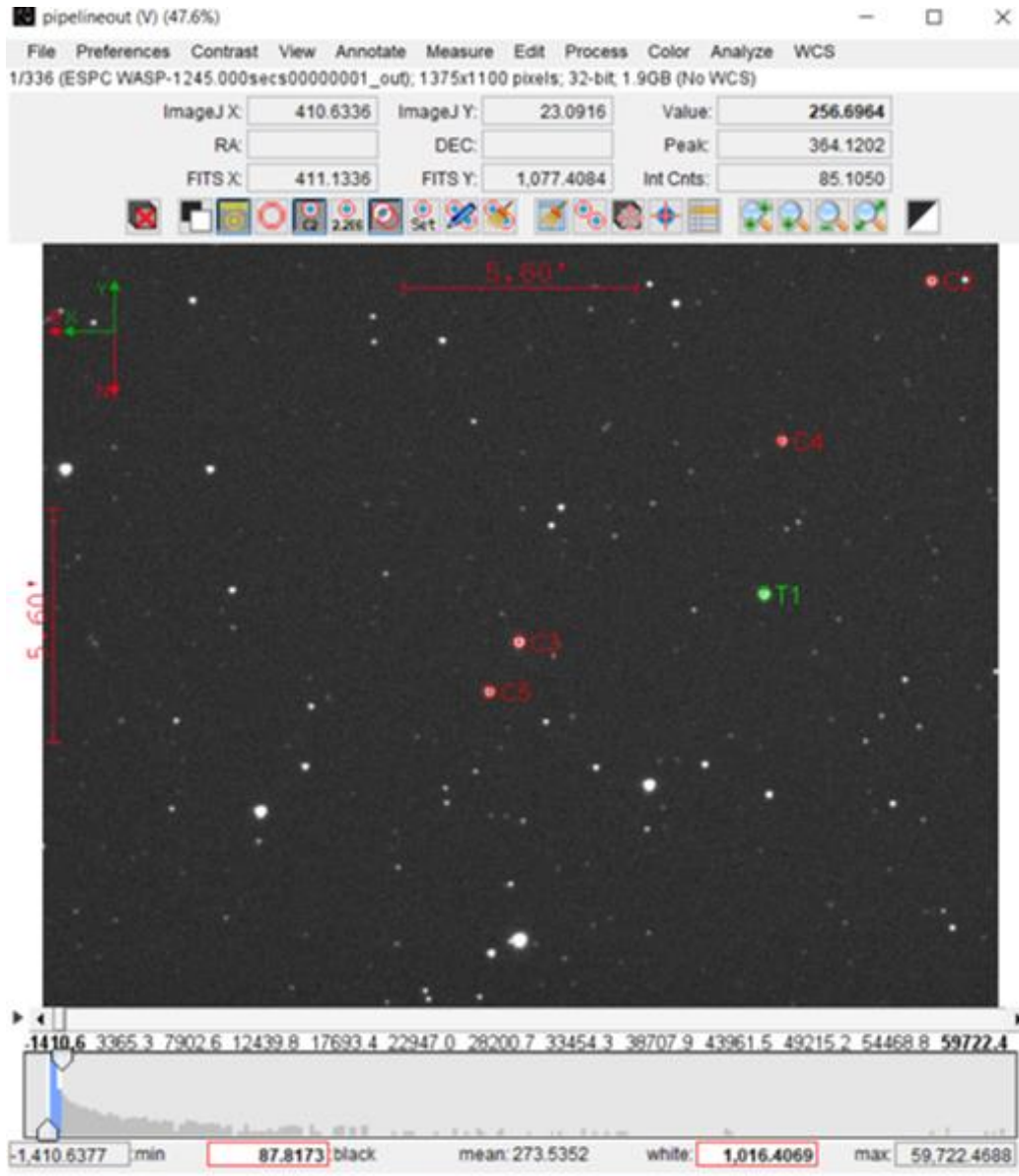


Figure 14. Sample Image with Aperture/Annulus Applied to Target and Comp Stars

Next, by hitting Enter on the keyboard, the differential photometry process will begin. A Measurements table will be constructed with each row representing the measurements for each slice in the stack. The labels in the Measurements table header identify the type of data in the label's column. Some of these labels correspond to common FITS header identifiers, and others are the Keywords specified in the Aperture Photometry Settings display (see Figure 13).

The following are some of the more important values in the Measurements table that will later be used in the exoplanet analysis (in the notation below, xx =Tn for a star designated as a target and xx=Cn for a star designated as a comparison star):

Source-Sky_{xx} – ADU counts within the photometry aperture, adjusted for the sky background counts that are in the photometry annulus;

tot_C_cnts – total Source-Sky counts of all the selected comparison stars;


rel_flux_Tn – relative flux of target star Tn = Source-Sky of Tn divided by tot_C_cnts;

rel_flux_Cn – relative flux of comparison star Cn = Source-Sky of Cn divided by the total Source-Sky counts of all the other selected comparison stars;


rel_flux_err_xx – error associated with the corresponding relative flux.

At this point, the Measurements table should be saved to a subdirectory such as something called AIJ Analysis. This is accomplished by selecting File->Save As on the Measurements table menu and selecting the AIJ Analysis subdirectory. The Measurements table can then be stored by AIJ with an extension of .xls, .tbl, or .txt. The extension to be used for the Measurements table can be set by going to the main AIJ menu bar and selecting: Edit->Options->Input/Output and entering the desired extension in the “File extension for tables” box. Note: it is preferable that an extension of .tbl be used for the Measurements table.

It should be noted that if the differential photometry needs to be redone on images currently in the stack, the following steps should be done:

1. Clear the existing aperture/annulus rings by selecting the “clear apertures and annotations from overlay” icon  on the Image Display.
2. On the Multi-Aperture Measurements Screen (Figure 11), make sure that the checkbox next to “Use previous x apertures” is unchecked.

7.5.3. Dealing with Misaligned Images

A shift in image orientation and therefore misalignment could be the case if guiding is poor. If the image shift is not too severe, AIJ’s Align Stack function could be used to align the images in the active stack. This can be accomplished by selecting the “align stack using apertures” icon  on the Image Display screen and entering a fairly large aperture setting, with correspondingly larger annulus settings. Images in the stack are aligned using this feature and the resulting aligned images are stored in a new subdirectory labelled “aligned.” Images in this subdirectory should then be the ones used during the differential photometry phase. The user should not forget to change back the aperture and annulus settings to ones that are appropriate for the differential photometry phase.

In the case of image rotation due to severe image shift, which AIJ’s Align function cannot correct, then the following can be done:

1. First, plate solve each image (see Section 7.4).
2. After plate solving has been completed, the user can then perform the differential photometry as before, except that on the Multi-Aperture Measurements screen (Figure 11), the box labelled “Use RA/Dec to locate aperture positions” should be checked. In addition, the First and Last slice should indicate the entire range of slices.

3. When the Place Apertures button is selected on this screen, the user would then place the aperture/annulus rings on the target and comp stars and, as before, press Enter on the keyboard. All the images in the stack are now analyzed.

7.5.4. Dealing with a Meridian Flip

If a meridian flip had occurred during the imaging session, then the images would be rotated 180° from the orientation shown in Figure 5. Thus, for the images taken after the flip, the aperture/annulus rings would not fall on the correct locations for the target and comp stars. Note: even if the CCD camera itself was rotated immediately prior to the beginning of imaging after the meridian flip, it is unlikely that the target and comp stars would land within the same aperture/annulus rings.

To conduct differential photometry with AIJ in the case of a meridian flip, the following method can be used (note: if there are misaligned images during the pre-flip period or during the post-flip period, then the method described in Section 7.5.3 should be used):

1. First, plate solve just the first image in the entire sequence. This is accomplished by entering “1” in both the Start Slice and End Slice fields of the Astrometry Settings screen. This will cause just the first image in the stack to be plate solved.
2. Next, the slice number for the image in the stack immediately following the meridian flip should be entered in these two fields and it should be plate solved.
3. On the Multi-Aperture Measurements screen (see Figure 11), the checkbox labelled “Use RA/Dec to locate aperture positions” should then be CHECKED and the checkbox labelled “Halt processing on WCS or centroid error” should be UNCHECKED.

When the differential photometry is now conducted, AIJ will proceed through the pre-flip images, using the coordinates in the first slice for placement of the aperture and annulus on subsequent pre-flip images, and then using the coordinates of the first slice after the flip for the remaining images in the stack.

7.5.5. Storing and Later Retrieving Target and Comparison Star Locations

It is sometimes desirable to store, and then at some later time retrieve, the location of the user’s target and comparison star selections. AIJ provides two methods for doing this before the differential photometry process is begun, but after the target and comparison stars have been selected. The first method can be used for non-plate solved images and the second method for plate solved images.

Method 1:

1. On the Image Display screen, select File->Save apertures. This will save the X,Y coordinates of each Tn and Cn star.
2. To later retrieve these stars, the File->Open apertures option can be selected.

Method 2:

1. Before the differential photometry process begins, at least the first image in the stack should be plate solved.
2. On the Multi-Aperture Measurements screen, the “RA/Dec to locate aperture positions” entry should be selected, and the “Use previous x apertures...” and “Halt processing on WCS or centroid error” entries should NOT be selected.
3. Next, the user should place apertures on the target and the desired comparison stars and then press Enter to conduct the differential photometry on all the images.
4. Once the Measurements table is created, from the Image Display the user should then select File->Export apertures to RA/Dec list... and then store the resulting file of target and comparison star locations in the AIJ Analysis directory.

With either method, if the user then wishes to use this same selection of target and comparison stars at a later time, the following process would be followed:

1. On the Multi-Aperture Measurements screen, the “Use previous x apertures...” entry should be selected, as well as the “RA/Dec to location aperture positions” entry.
2. On the Image Display, the user would then select File->Import apertures from RA/Dec list... and choose the previously stored file of target and comparison star locations. The target and comparison stars selections would then turn light green and red, respectively.
3. Next, on the Multi-Aperture Measurements screen, the user would select the Place Apertures tab.
4. The target and comparison star selections would then turn brighter green and red, respectively.
5. The user would then hit Enter to begin the differential photometry process as usual.

7.6. Prepare for Model Fit

In preparation for a model fit, the Multi-Plot Main  icon on the AIJ toolbar should be selected. When this is done, the following four screens pop-up:

Multi-plot Main
Multi-plot Reference Star Settings
Multi-plot Y-data
Data Set Fit Settings.

An AIJ file with an extension of .plotcfg contains the information used to create these screens. This file can be found at www.astrodennis.com, along with the calibration files and science images for the WASP-12b example in this document. In addition, a general purpose template.plotcfg file can also be found at www.astrodennis.com. The user can open a .plotcfg file by going to the upper left corner of the Multi-plot Main screen and selecting “File->Open plot configuration from file...” Likewise, the current instance of the above screens can be stored by selecting “File->Save plot configuration...”

The first step is to update correct values in the AIRMASS, HJD.UTC, and BJD_TDB column entries in the Measurements table if this was not done during the Calibration phase (see Section 7.2 above). This is accomplished as follows:

From the Multi-plot Main menu, select “Table->Add new astronomical data columns to table.” The following two screens then appear: “MP Coordinate Converter” and “Add astronomical data to table” (see Figure 15).

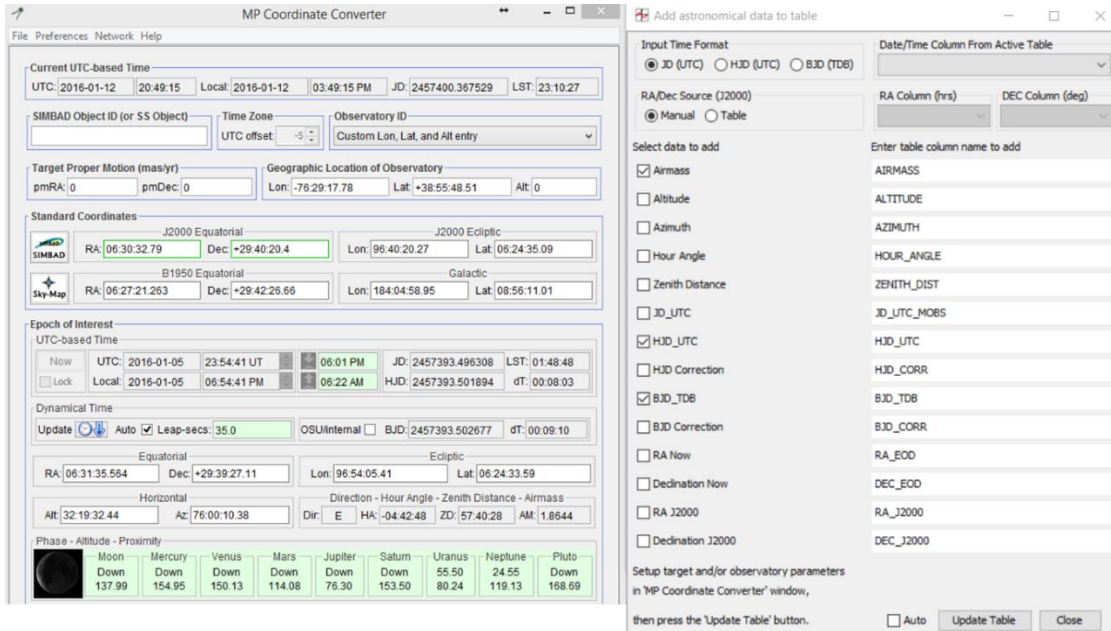



Figure 15. Screens for Correcting AIRMASS and Time Standard Values

On the MP Coordinate Converter screen, verify that the values are correct for Geographic Location of Observatory and the J2000 Equatorial Coordinates for the target star. Also, select Auto under the Dynamical Time section. On the “Add astronomical data to table” screen, verify that the boxes are checked as shown in the right-most screen in Figure 15, and then select Update Table. Press OK if the “Over-write existing data?” dialog box appears. The AIRMASS, HJD.UTC, and BJD_TDB columns in the Measurements table will then be updated.


7.7. Conduct Model Fit

On the Multi-plot Main screen, the appropriate value should be selected for the Default X-data entry (namely the timeframe to be used). In the example shown in Figure 16, because values for the (preferred) timeframe of BJD_TDB have been included in the Measurements table, BJD_TDB is selected. Appropriate entries for Title and Subtitle are also made.

Also on the Multi-plot Main screen, under the Fit and Normalize Region Selection box, entries are made for the Left and Right boxes that represent the predicted transit start (ingress) and end (egress) times, respectively. At the upper right of the Multi-plot Main screen, the copy icon 

is then selected. This positions the Predicted Ingress and Predicted Egress times on the V.markers at the appropriate places on the Plot of Measurements screen. The V.markers should remain untouched thereafter in order to show what the initial predictions were. However, the Fit and Normalize markers should later be positioned to the apparent ingress and egress points as shown on the Plot of Measurements screen (Figure 22). The Fit and Normalize markers are used by AIJ to define the out-of-transit data that is used to compute a baseline that the model fit uses to compute the relative normalized flux across the entire observation.

The Left Trim and Right Trim fields can be used to eliminate some amount of pre-ingress and post-egress data from the model. This might be done, for example, if there were systematics during the beginning or end of the observing session. The values in the Meridian Flip, Fit and Normalize Region, and V.Marker boxes are only the decimal part of the associated time (for example, 0.83508 would be entered if the time in question was 2457395.83508). If, however, the begin time is, say, 2457395.83508 and the end time “rolls over” into, say, 2457396.00175, then the begin decimal part should be 0.83508, but the end decimal part should be 1.00175.

Next, under the X-Axis Scaling box, check the Auto X-range button and click on the  icon. The X-min and X-max boxes will automatically be filled in with the minimum and maximum X values (BJD_TDB times in this example) that are in the Measurements table. Note: for this to work, at least one row on the Multi-plot Y screen (see Figure 17) should have its checkbox checked in the Plot column. Alternatively, the user can click on the Custom X-range box and fill in different X-min and X-max values. The Y-Axis Scaling box can be used now or later to allow the various plots to be sized so they all appear on the Plot of Measurements screen (see Figure 22). The Plot Size entries are used to size the Plot of Measurements screen on the user’s computer monitor.

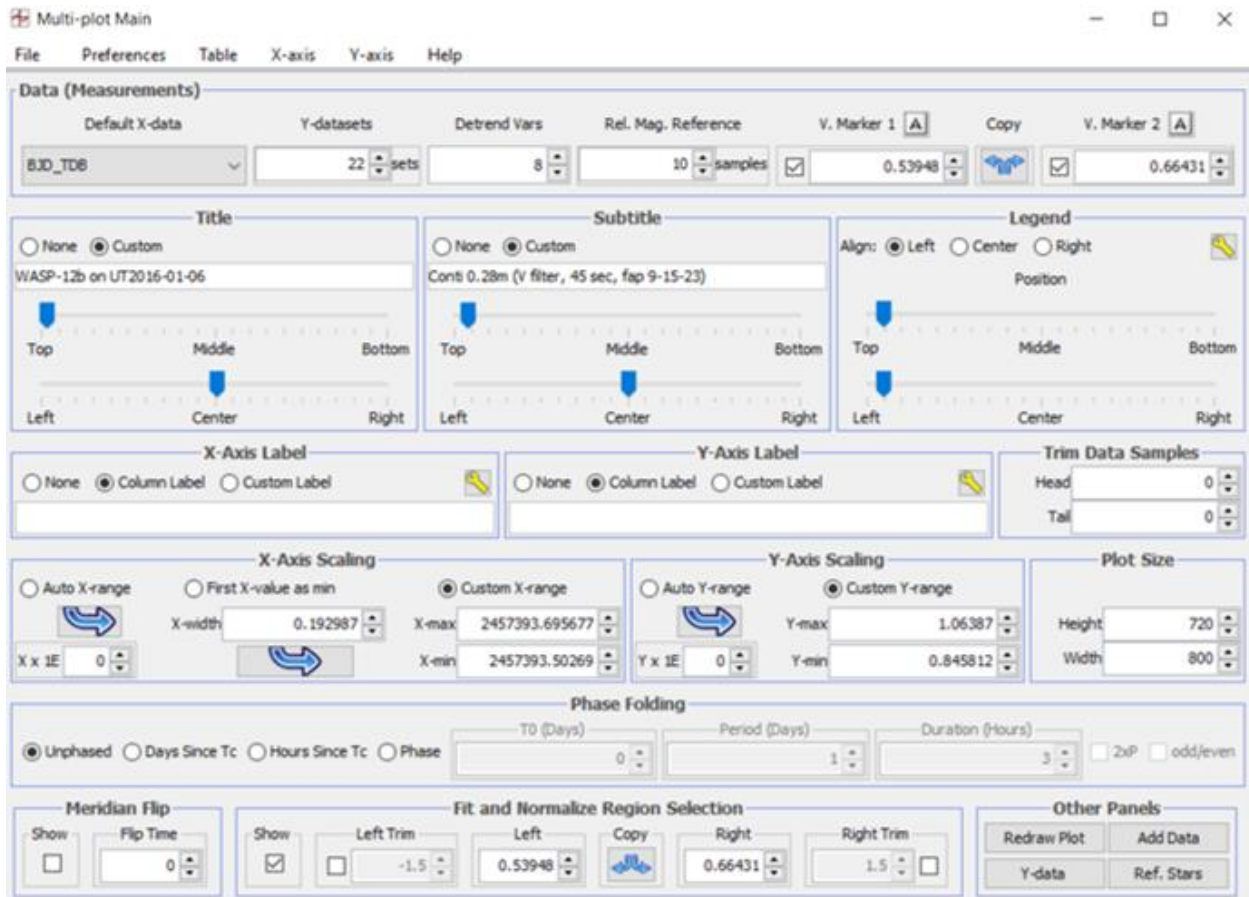


Figure 16. Multi-plot Main Screen

If a meridian flip has occurred, or if there is a break in the image session and the stars have moved to a different part of the CCD detector, then the Meridian Flip box on the Multi-plot Main screen is used to place a line in the middle of the gap where this discontinuity of data has occurred. The Show box should be checked and an entry made in the Flip Time box so that the Meridian Flip line is placed on the Plot of Measurements screen at the appropriate place.

7.8. Light Curve Plot

Before a visual plot of selected data sets can be obtained via the Plot of Measurements screen (Figure 22), the Multi-plot Y Data screen (Figure 17) needs to be setup. This is the main screen that determines where and how different data sets are plotted

Data Set	New	Plot	Auto Scale	X-data	Input to Flag	Y-data	Auto Error	Function	Y-operand	Color	Symbol	Lines	Input Average	Smooth	Length
1	<input checked="" type="checkbox"/>	<input checked="" type="checkbox"/>	<input checked="" type="checkbox"/>	default	<input type="checkbox"/>	rel_flux_T1	<input type="checkbox"/>	none		blue	dot	<input type="checkbox"/>	1	<input type="checkbox"/>	29
2	<input checked="" type="checkbox"/>	<input checked="" type="checkbox"/>	<input checked="" type="checkbox"/>	default	<input type="checkbox"/>	rel_flux_T1	<input type="checkbox"/>	none		red	dot	<input type="checkbox"/>	1	<input type="checkbox"/>	30
3	<input checked="" type="checkbox"/>	<input checked="" type="checkbox"/>	<input checked="" type="checkbox"/>	default	<input type="checkbox"/>	rel_flux_T1	<input type="checkbox"/>	none		dark green	dot	<input type="checkbox"/>	1	<input type="checkbox"/>	18
4	<input checked="" type="checkbox"/>	<input checked="" type="checkbox"/>	<input checked="" type="checkbox"/>	default	<input type="checkbox"/>	rel_flux_C2	<input type="checkbox"/>	none		brown	dot	<input type="checkbox"/>	1	<input type="checkbox"/>	28
5	<input checked="" type="checkbox"/>	<input checked="" type="checkbox"/>	<input checked="" type="checkbox"/>	default	<input type="checkbox"/>	rel_flux_C3	<input type="checkbox"/>	none		gray	dot	<input type="checkbox"/>	1	<input type="checkbox"/>	28
6	<input checked="" type="checkbox"/>	<input checked="" type="checkbox"/>	<input checked="" type="checkbox"/>	default	<input type="checkbox"/>	rel_flux_C4	<input type="checkbox"/>	none		dark gray	dot	<input type="checkbox"/>	1	<input type="checkbox"/>	27
7	<input checked="" type="checkbox"/>	<input checked="" type="checkbox"/>	<input checked="" type="checkbox"/>	default	<input type="checkbox"/>	rel_flux_C5	<input type="checkbox"/>	none		green	dot	<input type="checkbox"/>	1	<input type="checkbox"/>	28
8	<input checked="" type="checkbox"/>	<input checked="" type="checkbox"/>	<input checked="" type="checkbox"/>	default	<input type="checkbox"/>		<input type="checkbox"/>	none		light blue	dot	<input type="checkbox"/>	1	<input type="checkbox"/>	28
9	<input checked="" type="checkbox"/>	<input checked="" type="checkbox"/>	<input checked="" type="checkbox"/>	default	<input type="checkbox"/>		<input type="checkbox"/>	none		magenta	dot	<input type="checkbox"/>	1	<input type="checkbox"/>	14
10	<input checked="" type="checkbox"/>	<input checked="" type="checkbox"/>	<input checked="" type="checkbox"/>	default	<input type="checkbox"/>		<input type="checkbox"/>	none		orange	dot	<input type="checkbox"/>	1	<input type="checkbox"/>	30
11	<input checked="" type="checkbox"/>	<input checked="" type="checkbox"/>	<input checked="" type="checkbox"/>	default	<input type="checkbox"/>		<input type="checkbox"/>	none		teal	dot	<input type="checkbox"/>	1	<input type="checkbox"/>	31
12	<input checked="" type="checkbox"/>	<input checked="" type="checkbox"/>	<input checked="" type="checkbox"/>	default	<input type="checkbox"/>		<input type="checkbox"/>	none		brown	dot	<input type="checkbox"/>	1	<input type="checkbox"/>	31
13	<input checked="" type="checkbox"/>	<input checked="" type="checkbox"/>	<input checked="" type="checkbox"/>	default	<input type="checkbox"/>		<input type="checkbox"/>	none		gray	dot	<input type="checkbox"/>	1	<input type="checkbox"/>	31
14	<input checked="" type="checkbox"/>	<input checked="" type="checkbox"/>	<input checked="" type="checkbox"/>	default	<input type="checkbox"/>		<input type="checkbox"/>	none		yellow	dot	<input type="checkbox"/>	1	<input type="checkbox"/>	31
15	<input checked="" type="checkbox"/>	<input checked="" type="checkbox"/>	<input checked="" type="checkbox"/>	default	<input type="checkbox"/>		<input type="checkbox"/>	none		light gray	dot	<input type="checkbox"/>	1	<input type="checkbox"/>	31
16	<input checked="" type="checkbox"/>	<input checked="" type="checkbox"/>	<input checked="" type="checkbox"/>	default	<input type="checkbox"/>		<input type="checkbox"/>	none		pink	dot	<input type="checkbox"/>	1	<input type="checkbox"/>	31
17	<input checked="" type="checkbox"/>	<input checked="" type="checkbox"/>	<input checked="" type="checkbox"/>	default	<input type="checkbox"/>	Width_T1	<input type="checkbox"/>	none		light gray	dot	<input type="checkbox"/>	1	<input type="checkbox"/>	31
18	<input checked="" type="checkbox"/>	<input checked="" type="checkbox"/>	<input checked="" type="checkbox"/>	default	<input type="checkbox"/>	SkyPixel_T1	<input type="checkbox"/>	none		yellow	dot	<input type="checkbox"/>	1	<input type="checkbox"/>	31
19	<input checked="" type="checkbox"/>	<input checked="" type="checkbox"/>	<input checked="" type="checkbox"/>	default	<input type="checkbox"/>	AIRMASS	<input type="checkbox"/>	none		teal	dot	<input type="checkbox"/>	1	<input type="checkbox"/>	31
20	<input checked="" type="checkbox"/>	<input checked="" type="checkbox"/>	<input checked="" type="checkbox"/>	default	<input type="checkbox"/>	tot_C_cnts	<input type="checkbox"/>	none		brown	dot	<input type="checkbox"/>	1	<input type="checkbox"/>	31
21	<input checked="" type="checkbox"/>	<input checked="" type="checkbox"/>	<input checked="" type="checkbox"/>	default	<input type="checkbox"/>	X(FITS)_T1	<input type="checkbox"/>	none		pink	dot	<input type="checkbox"/>	1	<input type="checkbox"/>	31
22	<input checked="" type="checkbox"/>	<input checked="" type="checkbox"/>	<input checked="" type="checkbox"/>	default	<input type="checkbox"/>	Y(FITS)_T1	<input type="checkbox"/>	none		light blue	dot	<input type="checkbox"/>	1	<input type="checkbox"/>	31

Data Set	Fit Mode	Trend Select	Trend Coefficient	Trend Dataset	Norm/Flag Ref	Out Flag	Page Ref	Scale	then Shift	Out Bin	Bin Size (minutes)	Legend Type	Custom Legend
1	<input checked="" type="checkbox"/>	<input type="checkbox"/>	-0.126560		<input checked="" type="checkbox"/>	<input type="checkbox"/>		1	0	<input type="checkbox"/>	1	rel_flux_T1	
2	<input checked="" type="checkbox"/>	<input type="checkbox"/>	-0.000888	AIRMASS	<input checked="" type="checkbox"/>	<input type="checkbox"/>		1	-0.02	<input type="checkbox"/>	1	rel_flux_T1	
3	<input checked="" type="checkbox"/>	<input type="checkbox"/>	-0.000096	AIRMASS	<input checked="" type="checkbox"/>	<input type="checkbox"/>		1	-0.0401	<input checked="" type="checkbox"/>	5	rel_flux_T1	
4	<input checked="" type="checkbox"/>	<input type="checkbox"/>	0.0020830	AIRMASS	<input checked="" type="checkbox"/>	<input type="checkbox"/>		1	-0.08	<input type="checkbox"/>	5	rel_flux_T1	
5	<input checked="" type="checkbox"/>	<input type="checkbox"/>	-0.004774	AIRMASS	<input checked="" type="checkbox"/>	<input type="checkbox"/>		1	-0.09	<input type="checkbox"/>	5	rel_flux_T1	
6	<input checked="" type="checkbox"/>	<input type="checkbox"/>	0.0009037	AIRMASS	<input checked="" type="checkbox"/>	<input type="checkbox"/>		1	-0.1	<input type="checkbox"/>	5	rel_flux_T1	
7	<input checked="" type="checkbox"/>	<input type="checkbox"/>	0.0003211	AIRMASS	<input checked="" type="checkbox"/>	<input type="checkbox"/>		1	-0.11	<input type="checkbox"/>	5	rel_flux_T1	
8	<input checked="" type="checkbox"/>	<input type="checkbox"/>	0.0015225	AIRMASS	<input checked="" type="checkbox"/>	<input type="checkbox"/>		1	0	<input type="checkbox"/>	5	rel_flux_T1	
9	<input checked="" type="checkbox"/>	<input type="checkbox"/>	0.0003808	AIRMASS	<input checked="" type="checkbox"/>	<input type="checkbox"/>		1	0	<input type="checkbox"/>	5	rel_flux_T1	
10	<input checked="" type="checkbox"/>	<input type="checkbox"/>	-0.0002202	AIRMASS	<input checked="" type="checkbox"/>	<input type="checkbox"/>		1	0	<input type="checkbox"/>	5	rel_flux_T1	
11	<input checked="" type="checkbox"/>	<input type="checkbox"/>	-0.0008932	AIRMASS	<input checked="" type="checkbox"/>	<input type="checkbox"/>		1	0	<input type="checkbox"/>	5	rel_flux_T1	
12	<input checked="" type="checkbox"/>	<input type="checkbox"/>	-0.0003797	AIRMASS	<input checked="" type="checkbox"/>	<input type="checkbox"/>		1	0	<input type="checkbox"/>	5	rel_flux_T1	
13	<input checked="" type="checkbox"/>	<input type="checkbox"/>	-0.0008656	AIRMASS	<input checked="" type="checkbox"/>	<input type="checkbox"/>		1	0	<input type="checkbox"/>	5	rel_flux_T1	
14	<input checked="" type="checkbox"/>	<input type="checkbox"/>	0.0001432	AIRMASS	<input checked="" type="checkbox"/>	<input type="checkbox"/>		1	0	<input type="checkbox"/>	5	rel_flux_T1	
15	<input checked="" type="checkbox"/>	<input type="checkbox"/>	0.0033854	AIRMASS	<input checked="" type="checkbox"/>	<input type="checkbox"/>		1	0	<input type="checkbox"/>	5	rel_flux_T1	
16	<input checked="" type="checkbox"/>	<input type="checkbox"/>	0.0042507	AIRMASS	<input checked="" type="checkbox"/>	<input type="checkbox"/>		1	0	<input type="checkbox"/>	5	rel_flux_T1	
17	off	<input checked="" type="checkbox"/>	0.6889068	AIRMASS	<input checked="" type="checkbox"/>	<input type="checkbox"/>		15	-42	<input type="checkbox"/>	5	Width_T1	
18	off	<input checked="" type="checkbox"/>	127.099920	AIRMASS	<input checked="" type="checkbox"/>	<input type="checkbox"/>		15	-42	<input type="checkbox"/>	5	SkyPixel_T1	
19	off	<input type="checkbox"/>	1	AIRMASS	<input checked="" type="checkbox"/>	<input type="checkbox"/>		-15	-42	<input type="checkbox"/>	5	AIRMASS	
20	off	<input checked="" type="checkbox"/>	-289380.0	AIRMASS	<input checked="" type="checkbox"/>	<input type="checkbox"/>		15	-42	<input type="checkbox"/>	5	tot_C_cnts	
21	off	<input checked="" type="checkbox"/>	2.3708851	AIRMASS	<input checked="" type="checkbox"/>	<input type="checkbox"/>		15	-42	<input type="checkbox"/>	5	X(FITS)_T1	
22	off	<input checked="" type="checkbox"/>	-0.0554208	AIRMASS	<input checked="" type="checkbox"/>	<input type="checkbox"/>		15	-42	<input type="checkbox"/>	5	Y(FITS)_T1	

Figure 17. Multi-plot Y Data Screen

The following are the key parameters and selections for the Multi-plot Y screen:

The Plot column is used to select if a particular data set is to be plotted.

For each particular data set, the X-data column indicates what values from the Measurements table are used on the X-axis. A selection of “default” equates to the default values specified on the Multi-plot Main screen; in the example used throughout here, BJD_TDB is the default. The Y-data column is used to select which columns in the Measurements table are used for the Y-axis values.

The Input Average column indicates the number of points in the associated data set that are combined into one point. This should be set to 1, unless there is a need to combine data points because of very short exposure times. Note that Input Averaging does not change the underlying Measurements table data, unless the user adds additional columns containing such averaged data as described in Section 7.12.

The Smooth and Length columns are used for analyzing images taken from space-based telescopes such as Kepler and TESS and are thus not relevant to ground-based observations described here.

The Fit Mode column is used to select the type of fit that should be applied to the respective data set, as well as the span of data (indicated by the green area) that will be included in the fit. Thus, as seen in Figure 22, the raw data points of the relative change in flux of T1 are plotted with no fit, while the second plot is a fit of the raw data using a detrend parameter of AIRMASS, and a third plot is a fit of the data using an assumed transit model and a detrend parameter of AIRMASS. Also as seen in this example, the relative flux changes of the four comp stars are fit with a straight-line model. The reason for the latter four plots being linear is because it is assumed that there should be no relative changes in the comp star brightness throughout the imaging session, unlike the relative flux of T1 where it is assumed that there will be a dip in brightness due to the exoplanet's transit.

The Trend Select column serves two purposes. First, it reflects the detrend parameters that are being applied to the associated Fit Mode, which themselves will be selected on the Data Set Fit Settings Screen (Figure 18). Active detrend parameters are indicated by green. Second, selecting a particular detrend parameter will reflect its Trend Coefficient and the associated type of detrend data (e.g., AIRMASS).

The Norm/Mag Ref column indicates the range of data used to normalize the respective data set. In the example in Figure 17, the relative flux of T1 is normalized based on the out-of-transit data – i.e., data to the left of the begin-of-transit (ingress point) and to the right of the end-of-transit (egress point). As discussed earlier, these latter two points are set by the values in the Fit and Normalized Region Selection boxes on the Multi-plot Main Screen (Figure 16).

When checked, the Page Rel column indicates that the Scale and Shift columns should be interpreted as the percentage of the Y-range. Unchecked means that the Scale and Shift values are absolute numbers applied to the Y-range. The Scale and Shift values, along with the Y-min and Y-max values on the Multi-plot Main screen, are used to properly position the various plots on the Plots of Measurements screen. It should be noted that the raw data set representing the relative flux of T1 (namely the first row in Figure 17) should always have a Scale value = 1. This is because this data may be used by other global fit programs and should not be scaled.

Finally, the Out Bin column enables an overplot showing data binned at a user-specified Bin Size. A bin size of 5 minutes is generally an acceptable size. Note that “binning” here

is not to be confused with photosite binning that the user may have performed during the image capture process. Also, AIJ's binning of data does not affect the model fit since this feature is for display purposes only.

7.9. Data Set Fittings Screen

The Data Set Fit Settings Screen (Figure 18) is automatically opened whenever there is a Transit Fit selected for a data set (in this case Data Set 3) under Fit Mode on the Multi-plot Y Data screen (Figure 17). The following user inputs on the Data Set Fittings Set Screen are made that affect the resulting light curve:

Period – the orbital period, if it is available, from <https://exoplanetarchive.ipac.caltech.edu>; for example, in the case of WASP-12b, it is 1.0914 days.

Host Star Parameters – the spectral type (Sp.T) of the host star; this is strictly to estimate the radius R_* of the host star, which itself is used simply to calculate the radius of the exoplanet. If the user has knowledge of R_* (for example, from <https://exoplanetarchive.ipac.caltech.edu>) then this value may be entered in the $R_*(R_{\text{sun}})$ box. In this example for WASP-12, $R_*=1.74942$.

Quad LD U1 and Quad LD U2 – these are the quadratic limb darkening coefficients associated with the host star and the particular filter being used. These values can be found by using the limb darkening coefficient calculator at <http://astrutils.astronomy.ohio-state.edu/exofast/limbdark.shtml>. In the example here, the coefficients used for WASP-12b are 0.39056081 and 0.3026992, respectively. Note that these are placed in the Prior Center Column and locked.

Choose the following possible detrend parameters from the dropdown boxes, however, initially only select AIRMASS as the one to be used:

1. AIRMASS
2. Width_T1
3. Sky/Pixel_T1
4. X(FITS)_T1
5. Y(FITS)_T1
6. tot_C_cnts
7. BJD_TDB
8. CCD-TEMP.

As will be seen below, AIJ has a utility for automatically selecting detrend parameter(s) that minimize the BIC statistical value, which itself is a measure of the goodness of the transit model fit.

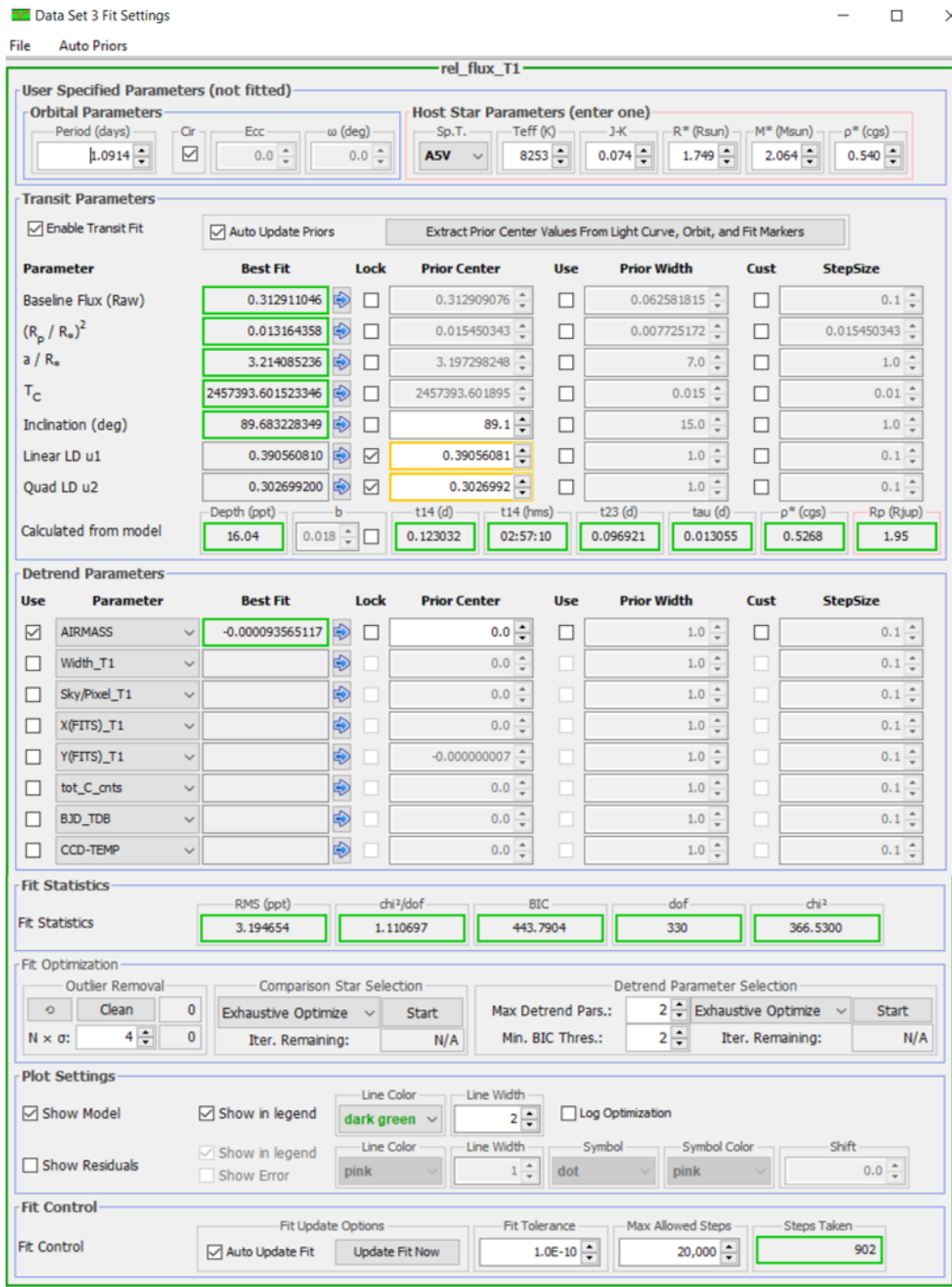


Figure 18. Data Set Fit Settings Screen

The Y-min and Y-max values on the Multi-plot Main screen can be adjusted to display desired portions of the Measurements table on the plot, although as previously mentioned, it is best to select Auto-X-range under X-Axis Scaling on the Multi-plot Main screen to display the entire range of X-values.

It is possible to see how the fit is improved by applying any number of Detrend Parameters. The most common is AIRMASS. Other Detrend Parameters can also be selected. If a meridian flip or a break in data collection has occurred where stars have moved on the CCD detector, then Meridian_Flip can also be selected (note that if this is done, the Flip Time selection and value must be made on the Multi-plot Main screen). Other Detrend Parameters could also be selected to see their effect(s) on the model fit. A good rule of thumb for whether a Detrend Parameter is effective is to view the Bayesian Information Criterion (BIC) value. If it reduces by more than 3.0 when a Detrend Parameter is selected, then that Detrend Parameter should be selected. If it decreases by less than 3.0 or increases, then the Detrend Parameter is not that relevant. See Section 7.11 for a more detailed discussion on selecting detrend parameters.

Plot Settings on the Data Set Fit Setting Screen are used to define if and how the transit model and residuals are displayed. In addition, a Shift value is used to move the residual plot up or down on the Plot of Measurements screen.

Finally, the Multi-plot Reference Star Settings screen (Figure 19) is used to deselect or select which comp stars the user would like to include in the model fit. This is useful if it is determined after viewing a particular comp star’s relative flux in the Plot of Measurements screen (Figure 22) that its data points do not follow a linear fit – i.e., an indication that it is most likely a variable star. In such a case, the comp star can be deselected from the ensemble of comp stars to be used. Figure 20 shows an example where comp star C5 might be deselected. When this deselection takes place, the comp star identifier “C” is changed to a “T” both on the Multi-plot Reference Star as screen depicted in Figure 20, as well as on the Image Display (see Figure 21). The deselected comp star’s selection box in Figure 17 can then be unchecked so its plot no longer appears.

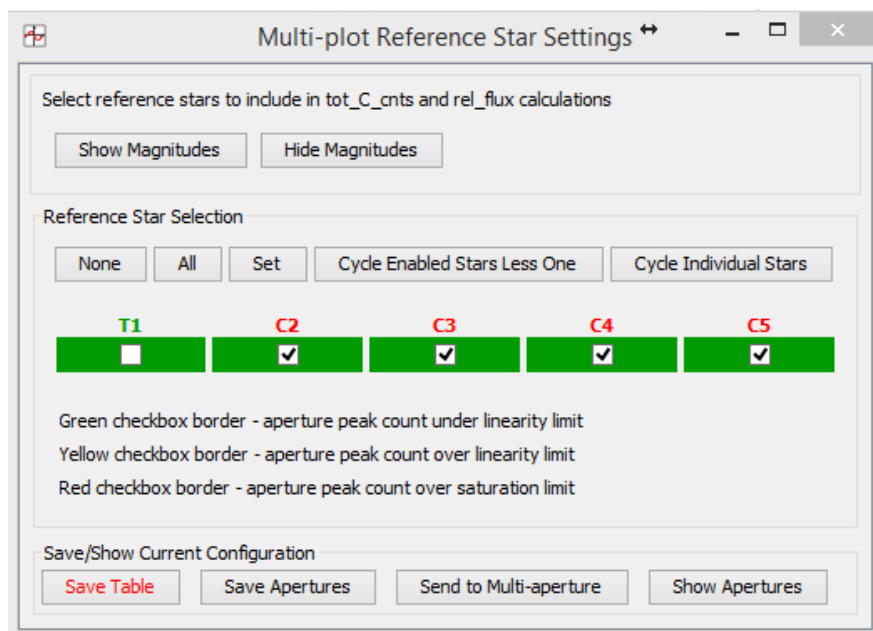


Figure 19. Multi-plot Reference Star Settings Screen

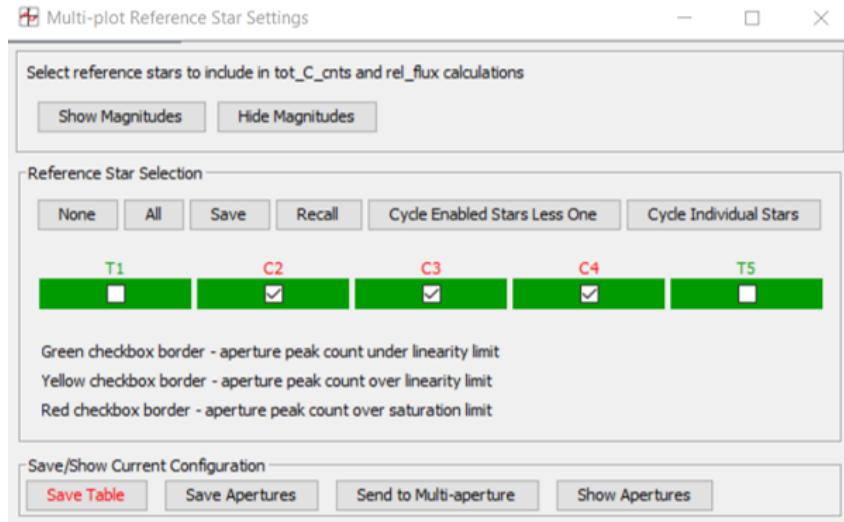


Figure 20. Example after C5 is deselected

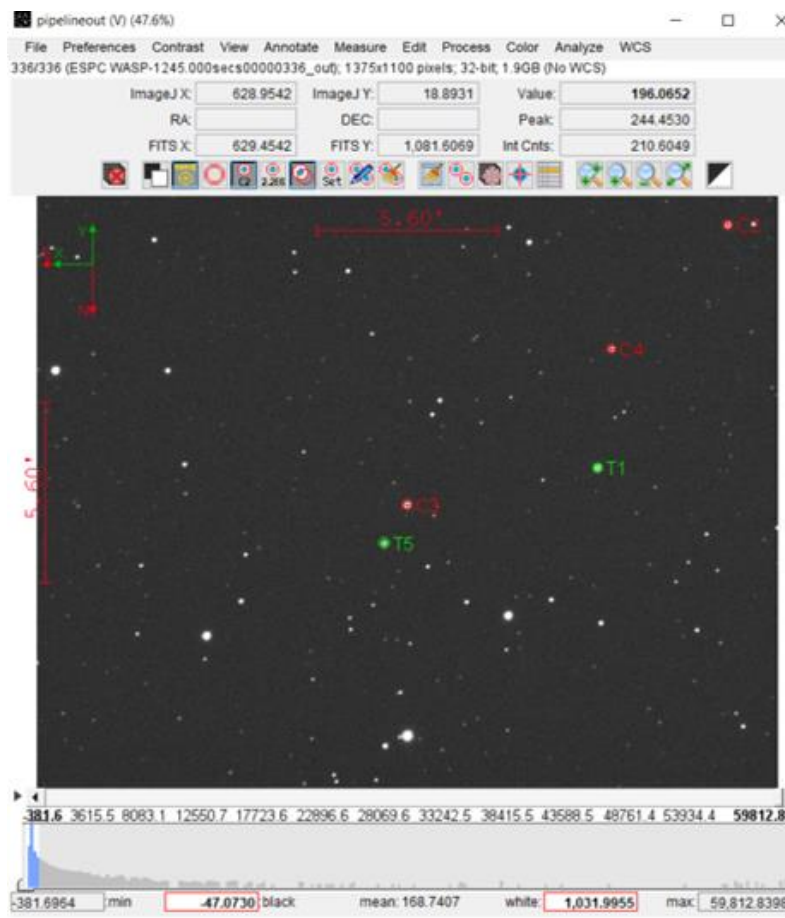


Figure 21. Updated Images Display Showing C5 Changed to T5

A deselected comp star's data is then not included in the calculation of the target's relative flux and therefore the model fit, but its data is still maintained in the Measurements table but with a column heading of "Tnn" vs. "Cnn".

After the differential photometry has taken place and after the appropriate values on the Data Set Fitting screen are set, AIJ offers both a manual and an automated way of optimizing the transit model fit. Section 7.11 describes how an AIJ model fit can be manually optimized. The model fit can be automatically optimized by utilizing the following three functions in the Fit Optimization region of the Data Set screen:

1. Outlier Removal –using the Clean button, observation data points can be removed from the model that are outliers due to their photometric error: (1) being more than N times below or above the transit model (Left click); (2) being more than N times the value of the RMS of the transit model (Shift-Left click); or (3) begin more than N times the median of all photometric errors (Alt-Left click). Hovering over the Clean button describes how to select each of these "cleaning" options.
2. Comparison Star Selection – by clicking on Start, AIJ will cycle through all combinations of comparison stars and select the ones that minimize the model fit RMS
3. Detrend Parameter Selection – by clicking on Start, AIJ will select the user-specified number of detrend parameters that minimize the BIC statistical measure, given a user-specified minimum BIC threshold.

The settings in Figure 16, Figure 17, Figure 18, and Figure 19 produced the light curve and other plots shown in Figure 22. Note that in addition to the light curve plots for the target and comp stars, Figure 22 also contains plots of the following Measurement table values that are measures of common systematics, which may correlate with anomalies in the light curve plots:

1. Width_T1: a measure of changes in the point-spread function of the target star due to changes in seeing conditions;
2. Sky/Pixel: a measure of changes in the background sky;
3. AIRMASS: the expected changes in Airmass for the observer's location;
4. tot_C_cnts: the total Source-Sky counts of all the selected comp stars – a measure of transparency and seeing (in ideal conditions, the plot of this and inverse AIRMASS should track each other);
5. X(FITS)_T1: a measure of image shift of the target star on the X-axis;
6. Y(FITS)_T1: a measure of images shift of the target star on the Y-axis.

Finally, Figure 23 is an example of an exoplanet fit based on data collected by amateur astronomer Paul Benni for exoplanet Wasp-76b. It shows how a Meridian_Flip detrend parameter was used to take care of an offset in data points caused by the target and comp stars landing on a different part of the CCD detector after the meridian flip occurred.

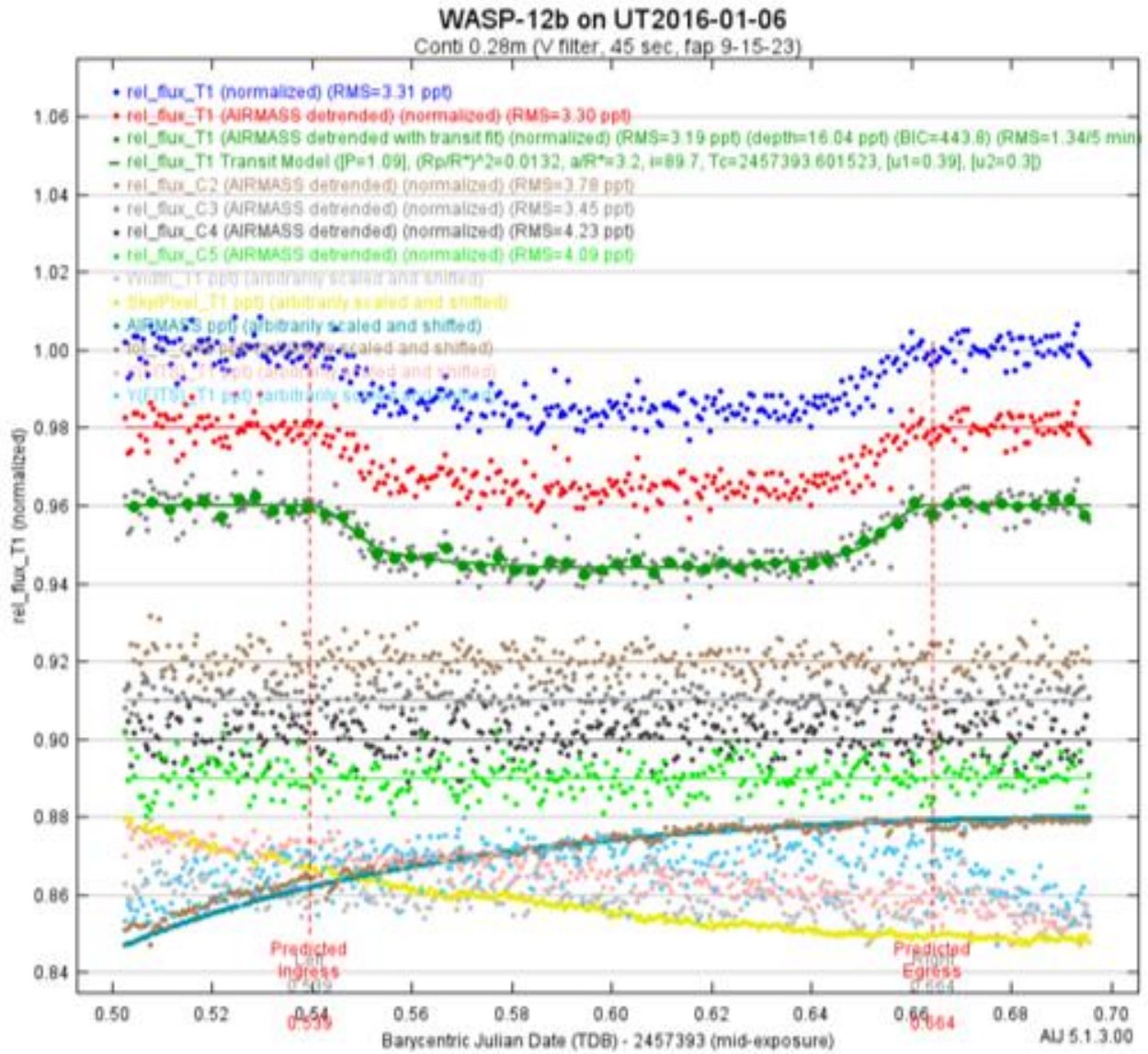


Figure 22. Plot of Measurements Screen

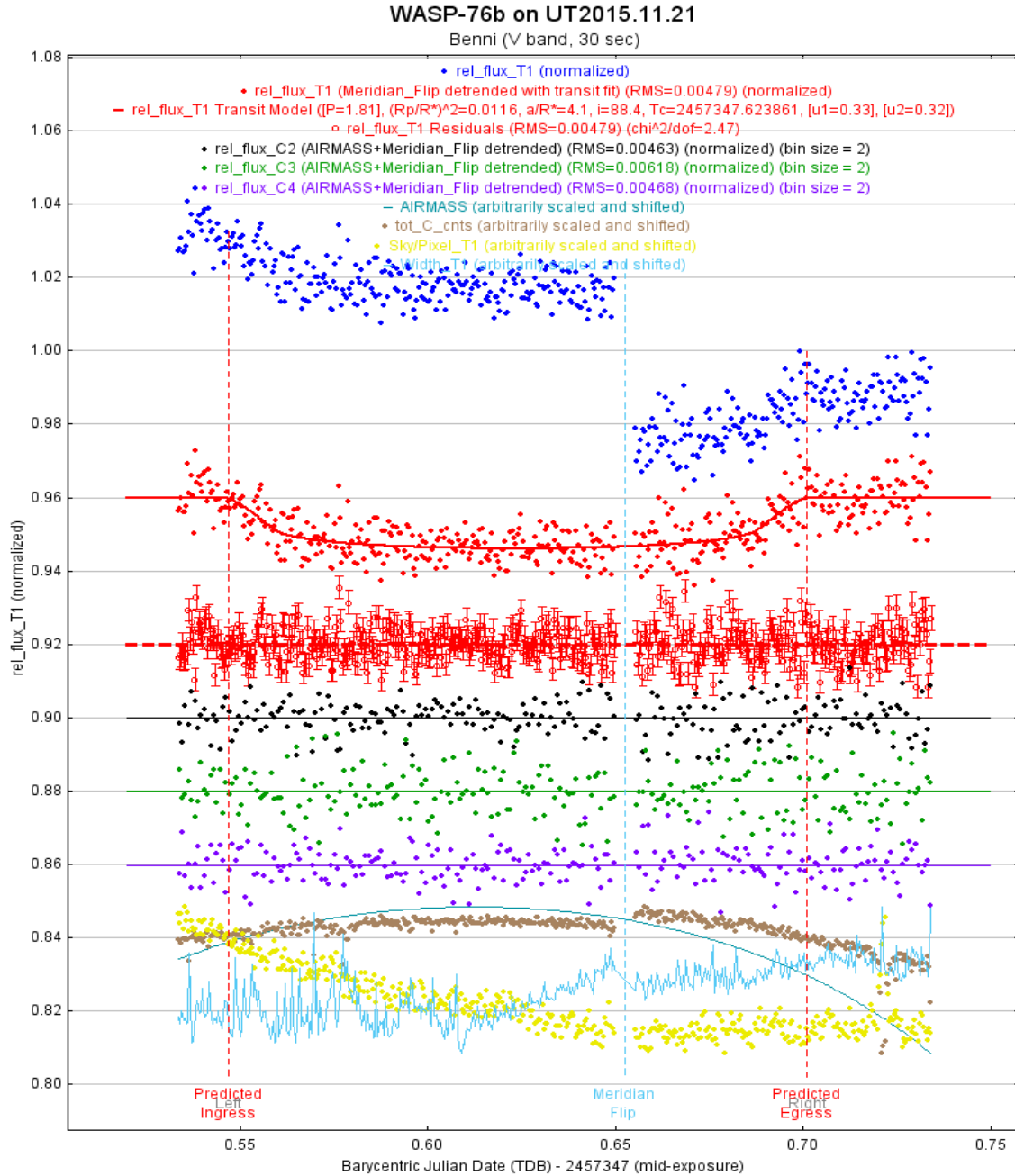


Figure 23. Example Using Meridian_Flip Detrend Parameter

7.10. Saving Model Data

Since all of the previous model fitting and detrending does not change the Measurements table, the user is advised to save the current status of these and other fitting parameters by selecting File->Save all or File=>Save all (with options) in the upper left of the Multi-plot Main screen.

7.11. Manually Optimizing a Model Fit

The following are guidelines for manually optimizing full transits only, and not partial transits:

1. Initially select AIRMASS as the only detrending parameter. If a meridian flip was done, then Meridian_Flip should be maintained as a detrend parameter throughout the remaining steps below.
2. Determine the effects on RMS of various comparison stars being removed (as seen earlier, AIJ allows the user to easily “deselect” a comparison star, in which case all of the computations associated with that star are redone). If the RMS decreases when a particular comparison star is deselected, then leave it out. It is sometimes the case that the relative flux of such stars also will show an amount of scatter greater than the target star and the other comparison stars.
3. With the above selection of comparison stars and AIRMASS remaining as the only detrend parameter (with maybe the addition of Meridian_Flip), redo the differential photometry and model fits with smaller and larger aperture and annulus radii. Determine the effects on RMS for each new radii combination. Choose the combination that results in the lowest RMS.
4. Repeat Step 2 on this new set of radii to achieve the best RMS. In addition to the resulting RMS value, record the BIC value that goes along with the best RMS.
5. Determine the effects of different detrending parameters. First, remove AIRMASS detrending and see if BIC increases by 3 or more. If it does, keep AIRMASS detrending; if it does not, do not include AIRMASS. Next, add the remaining detrend parameters one at a time and observe changes in the BIC value. Of those detrend parameters that result in at least a reduction of 3 in the BIC value, choose the (at most) 2 parameters that cause the greatest reduction in this value.

One way to think about detrend parameters and which ones are "legitimate" to use is to ask: what external factors, unrelated to the target itself, can influence the target's relative flux and whose own calculation is not based on factors that also affect the target's relative flux measurement. For example, since the relative flux of, say target T1, contains Source-Sky as one of its elements, then Source-Sky_T1 would obviously not be an appropriate detrend parameter for rel_flux_T1.

Also, one would not want to use detrend parameters, such as AIRMASS and tot_C_cnts, that are themselves somewhat correlated (for example, tot_C_cnts generally tracks higher with lower AIRMASS and lower with higher AIRMASS).

6. Using the resulting set of detrend parameters, repeat again Step 2 to see the effects on RMS from removing one or more comparison stars.

It should be noted that completing all of the above steps is optional. However, if the results of the model fit are being supplied to a science team and these steps are not conducted by the observer, then the observer's original calibrated images may have to be transferred to the science team for them to conduct a more detailed analysis.

7.12. Input to External Programs

For certain exoplanet research campaigns, the exoplanet observer may be asked to submit certain data for use by external programs. The example below shows how a file can be created for a global fit program such as EXOFAST (NASA, 2022A) that requires the following for each data point: its BJD_TDB time, the normalized relative flux of the target star for that data point, the error of the normalized relative flux of the target star, and values for any detrend parameters used in the AIJ model fit.

Creating such a file is accomplished as follows:

Click on the New Col down arrow for the data set representing the normalized relative flux of the target star (in the example used throughout here, this would be the first New Col down arrow in Figure 17). A pop-screen then appears and entries would be made as shown in Figure 24.

Add new columns to table

Add new column from X-data
New column name (from X-data): BJD_TDB_B

Add new column from Y-data
New column name (from Y-data): rel_flux_T1_n

Add new column from Y-error
New column name (from Y-error): rel_flux_err_T1_n

Remove Scale from Y-data and Y-error before saving

Remove Shift from Y-data before saving

New data column(s) will be added to the open table.
Save table to save new column(s) to disk.

OK Cancel

Figure 24. Screen to Add New Columns to the Measurements Table

When OK is selected, three new columns are added to the Measurements table. These columns add for each image the normalized relative flux of the target star and the error of the normalized relative flux of the target star, in addition to the BJD_TDB time again.

Note: the values for Bin Size, Scale and Shift on the Multi-plot Y screen (see Figure 17) affect the calculation of the relative flux for T1 in this example. If any of these values have been changed, reset them to Input Average =1, Scale=1, and Shift=0 before clicking on the New Col down arrow in the above example, unless such changes are intentional (e.g., if it is desired to input average data points). As seen in Figure 24, the checkboxes at the bottom of the pop-up screen conveniently force the Scale and Shift values to 0 when computing the normalize relative flux.

Finally, to generate a file containing this information for an external global fit program, the “File->Save data subset to file...” selection is made from the Multi-plot Main screen. The Save Data Subset screen then appears (Figure 25) and entries are made as shown. In this case, the BJD_TDB value, the normalized relative flux of the target star, the error of the normalized relative flux of the target star, and the AIRMASS values are selected. AIRMASS is included because it is the detrend parameter used in the AIJ model fit.

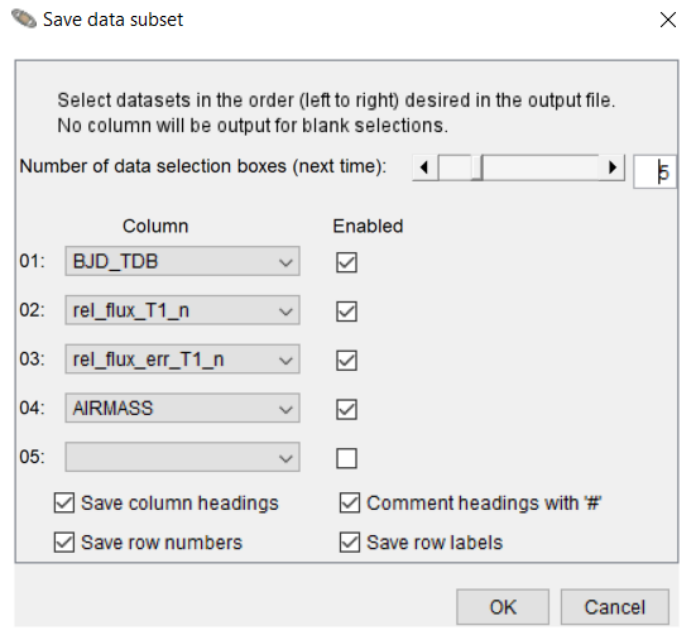


Figure 25. Save Data Subset Screen

When OK is selected, a separate file is created that contains these values.

Another example of data being transferred to an external entity would be the user uploading an exoplanet observation to the AAVSO Exoplanet Database (AED). This database is intended to be an archive of amateur astronomer observations of confirmed exoplanets for the purpose of helping to refine their ephemerides, as well as to detect any transit timing variations (TTVs) that could be indicative of a companion planet.

To upload an observation to the AED, the user would go to File->Create AAVSO Exoplanet Database formatted data... on AIJ’s Multi-plot Main screen. A dialog screen would then appear prompting the user for information about the observation, as well as a selection of the

Measurements table associated with the observation. A Help guide that describes entries on this screen can be found at: www.astrodennis.com/AIJMacroHelp.pdf.

8. Summary

As stated in the Introduction, this Guide was intended as a practical, step-by-step approach to image calibration, differential photometry, light curve plotting, and exoplanet transit modeling using AIJ. Users are encouraged to contact the author at the following email address for any suggested changes to areas that are unclear and could use further explanation: dennis@astrodennis.com.

ACKNOWLEDGEMENTS

The author would like to offer special thanks to AIJ's author, Dr. Karen A. Collins, for her suggestions and comments in preparing the initial version of this Guide and for her continuing support.

REFERENCES

AAVSO: <http://www.aavso.org/apps/vsp/> (2017)

AAVSO guide to CCD/CMOS Photometry (2022)

Baudat, G., "Full Frame Guiding and Focusing," Proceedings of NEAIC 2017, April, 2017

Conti, D., "Hubble Exoplanet Pro/Am Collaboration," Proceedings of the AAVSO 2015 Annual Meeting, November, 2015.

di Cicco, D., "The ONAG from Innovation Foresights," Sky&Telescope, December, 2012.

Motta, M., "Amateurs Track a Disintegrating Exoplanet," Sky&Telescope, April, 2017.

NASA: <https://jwst.nasa.gov/> (2017).

NASA: TESS Science Writer's Guide (2018).

NASA: <https://exoplanets.nasa.gov/exoplanet-watch/about-exoplanet-watch/overview/> (2022)

NASA: https://exoplanetarchive.ipac.caltech.edu/docs/exofast/exofast_home.html (2022A)

Pepper, J., et al., “*The Kilodegree Extremely Little Telescope (KELT): A Small Robotic Telescope for Large-Area Synoptic Surveys*,” (2007), arXiv: 0704.0460v2.

Ricker, G., et al., “*Transiting Exoplanet Survey Satellite*,” (2015), *Journal of Astronomical Telescopes, Instruments, and Systems* 1 (1).

Appendix A: Observation Worksheet

		Exoplanet: WASP-12b					
		Observer: Dennis Conti					
Item	Host Star/Exoplanet Information:	(click here)					
1	RA:	06:30:32.79					
2	Dec:	29:40:20.4					
3	Period (days):	1.0914					
4	R-:	1.74942					
5	T _{eff} :	6154					
6	V mag:	11.7					
		Suggested range of comp stars:		11.26 to 12.45 mag			
7	Link to Reference Paper (optional):						
8	Date of Observation (UT):	01/5-6/2016					
				BJD_TDB			
9	Predicted Ingress:			2457393.53948			
10	Predicted Egress:			2457393.66431			
	Predicted midpoint:			2457393.60190			
11	Model fit midpoint (T _c) in BJD_TDB:			2457393.60152			
		Approximate difference:		0.5		minutes	
		Observing Location:					
12	Latitude:			38:55:48.51 N			
13	Longitude:			76:29:17.78 W			
14	Altitude (m):			0			
15	Aperture (mm):			280			
16	Focal length (mm):			3263			
17	Make/model of CCD Camera:			SX694M			
18	Gain (e-/ADU):			0.3			
19	Readout noise (e-):			5.0			
20	Dark current (e-/pixel/sec):			0.012			
21	Point of where CCD goes non-linear (ADUs):			45,000			
				X		Y	
22	No. of pixels (unbinned):	2750		2200			
23	Pixel size (microns -unbinned):	4.54		4.54			
24	Binning used for this observation:	2		2			
25	Exposure time (secs):	45					
26	Filter used:	V					
		Limb darkening coefficients:		(click here)			
27	Quadratic LD u1:	0.39056081					
28	Quadratic LD u2:	0.3026992					
		Image scale (arcsec/pixel):		0.574		0.574	
		FOV (arcmin):		13.15		10.52	
29	FWHM (pixels):	4.54					
		FWHM (arcseconds):		2.61			
		Final Aperture Profile (FAP) Settings:					
30	Aperture radius:	9					
31	Inner annulus radius:	15					
32	Outer annulus radius:	23					
				# of Science Images:			
33	Original #:	336		Final #:	336		
34	Images <u>not</u> used:						